



- Maximum **(3) Underbar** and **(3) Refrigeration** products per order
- Order cannot be combined with non-quick ship items

SHIPS WITHIN
3 BUSINESS DAYS
from order submission.

Send to orders@krowne.com and reference
"Quick Ship" on the order.

KROWNE[®]

ICE BINS

- Available with or without cold plates
- 12" deep liners

Model	Length	Ice Capacity	Cold Plate Circuits	Weight
KR19-24	24"	74 lbs	-	67 lbs
KR19-24-10	24"	74 lbs	10	124 lbs
KR19-30	30"	92 lbs	-	76 lbs
KR19-30-10	30"	92 lbs	10	138 lbs
KR19-36	36"	110 lbs	-	86 lbs
KR19-36-10	36"	110 lbs	10	152 lbs



KR19-30-10

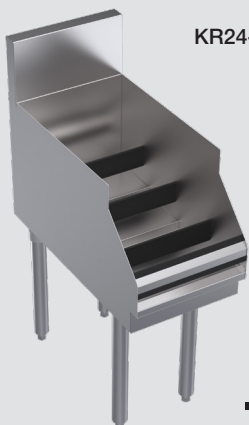
BAR SINKS

- Royal Series wall mount faucet & drains with overflows included



KR19-53C

Model	Length	Bowls	Drainboard Size	Bowl Location	Weight
KR19-53C	60"	3	(2) 12"	Center	69 lbs
KR19-63C	72"	3	(2) 18"	Center	75 lbs
KR19-64C	72"	4	(2) 12"	Center	79 lbs



KR24-12RD

4-STEP LIQUOR DISPLAY

- Includes sound deadened speed rails

Model	Length	Bottle Storage	Weight
KR24-12RD	12"	12	40 lbs
KR24-18RD	18"	16	48 lbs
KR24-24RD	24"	24	60 lbs



RS-24

SINGLE SPEED RAILS

- No. 12 stainless steel sheet metal 5/8" long screws are required and are not included

Model	Length	Depth	Weight
RS-24	24"	5"	4 lbs
RS-30	30"	5"	5 lbs
RS-36	36"	5"	7 lbs

BLENDER DUMP SINKS



KR24-12BD

- Royal Series faucet included
- 1-1/2" center drain included (23-122)

Model	Size	Bowl Size	Weight
KR24-12BD	12"	10" x 12" x 7"	43 lbs
KR24-18BD	18"	10" x 14" x 7"	53 lbs

DRAINBOARD

- Stainless embossed drainboard top
- Built-in 1-1/4" drain (23-120)

Model	Length	Weight
KR19-GS24	24"	50 lbs



KR19-GS24



KR24-12ST

SINK WITH SOAP & TOWEL DISPENSER

- Built-in soap and towel dispenser
- Royal Series faucet included

Model	Length	Weight
KR24-12ST	12"	60 lbs



KR24-GSB3

GLASS STORAGE CABINETS

- Glass Racks not included
- Built-in 1-1/4" drain

Model	Length	Feature	Weight
KR24-GSB1	24"	Adjustable (3) Racks	40 lbs
KR24-GSB3	24"	Drainboard / Middle Shelf	48 lbs

SELF CONTAINED BACK BAR REFRIGERATION

Krowne offers a **Quick-Ship Program** on our best selling self-contained back bar refrigerators.

- Built-in cool white LED lighting (7000K)
- All stainless steel, coved corner interior
- Heavy duty self-closing 24"W doors
- DynamicChill 360° Technology



BS36L-KNS-L

ONE DOOR (36"L x 24"D x 35"H)

Model	Description
BS36L-BNS-L	36" Self-Contained Back Bar Cooler (Black Vinyl Finish)
BS36L-SNS-L	36" Self-Contained Back Bar Cooler (Stainless Steel Vinyl Finish)
BS36L-KNS-L	36" Self-Contained Back Bar Cooler (Glass with Stainless Steel Vinyl Finish)



BS60L-BNS-LR

TWO DOOR (60"L x 24"D x 35"H)

Model	Description
BS60L-BNS-LR	60" Self-Contained Back Bar Cooler (Black Vinyl Finish)
BS60L-SNS-LR	60" Self-Contained Back Bar Cooler (Stainless Steel Vinyl Finish)
BS60L-KNS-LR	60" Self-Contained Back Bar Cooler (Glass with Stainless Steel Vinyl Finish)



BS84L-SNS-LLR

THREE DOOR (84"L x 24"D x 35"H)

Model	Description
BS84L-BNS-LLR	84" Self-Contained Back Bar Cooler (Black Vinyl Finish)
BS84L-SNS-LLR	84" Self-Contained Back Bar Cooler (Stainless Steel Vinyl Finish)
BS84L-KNS-LLR	84" Self-Contained Back Bar Cooler (Glass with Stainless Steel Vinyl Finish)



MUG FROSTERS

- Digital thermostat
- All stainless steel interior
- Heavy duty doors with stainless steel handles with built-in locks

SLIDE TOP & FRONT DOOR MUG FROSTERS

Model	Length	Exterior Finish	Doors	Layers	Mug Capacity 10 oz.	HP	Full Load Amps	Weight
MC24B	24"	Black Vinyl	1	2	95	1/3	2.5	160 lbs
MC24S	24"	Stainless Steel	1	2	95	1/3	2.5	160 lbs
MC36B	36"	Black Vinyl	1	2	165	1/3	2.6	200 lbs
MC36S	36"	Stainless Steel	1	2	165	1/3	2.6	200 lbs
MC48B	48"	Black Vinyl	2	2	240	1/3	2.7	260 lbs
MC48S	48"	Stainless Steel	2	2	240	1/3	2.7	260 lbs
FMC24-SN-R	24"	Stainless Steel	1	2	90	1/3	2.5	220 lbs

BOTTLE COOLERS

- All stainless steel covered corner interior
- Available in stainless steel or black vinyl
- Heavy duty doors & center bar construction




Model	Length	Exterior Finish	Doors	Case Capacity 12 oz. Bottle	Divider Racks	HP	Amps	Weight
BC24-BG	24"	Black Vinyl	1	6	1	1/5	1.53	185 lbs
BC24-SS	24"	Stainless Steel	1	6	1	1/5	1.53	185 lbs
BC36-BG	36"	Black Vinyl	1	9.5	1	1/5	1.53	240 lbs
BC36-SS	36"	Stainless Steel	1	9.5	1	1/5	1.53	240 lbs
BC48-BG	48"	Black Vinyl	2	15.5	2	1/4	2.18	295 lbs
BC48-SS	48"	Stainless Steel	2	15.5	2	1/4	2.18	295 lbs
BC72-BG	72"	Black Vinyl	2	25.5	2	1/4	2.53	410 lbs
BC72-SS	72"	Stainless Steel	2	25.5	2	1/4	2.53	410 lbs
BC96-BG	96"	Black Vinyl	3	37	3	1/3	2.71	455 lbs
BC96-SS	96"	Stainless Steel	3	37	3	1/3	2.71	455 lbs

KROWNE®

100 Haul Rd. Wayne, NJ 07470

krowne.com

 800.631.0442

 orders@krowne.com

 sales@krowne.com