



Model: _____ Item #: _____ Date: _____
 Project: _____ Qty: _____ Approved By: _____

Royal Series Multi Station

Royal Series Underbar



KR19-M36R-10 shown without optional Speedrail

OPTIONAL ACCESSORIES

- KR-101 - Condiment Tray
- KR-103 - Stainless Steel Divider
- KR-310 - Right End Splash
- KR-311 - Left End Splash
- SC"XX"H - Partial Sliding Cover ("XX" denotes size of Ice Bin)
- SC"XX"F - Full Sliding Cover ("XX" denotes size of Ice Bin)
- KR-401 - Cap Catcher and Opener
- KR-406 - Faucet installed over Ice Bin for Meltdown
- KR-501 - Towel Ring
- KR-502 - 15" Deep Liner on Ice Bin Section

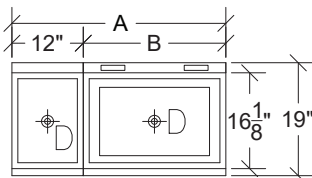
STANDARD FEATURES

- **Interior**
20 gauge stainless steel. 12" deep Ice Bin section. 10" deep Bottle section, wire bottle racks included
- **Front Apron**
20 gauge stainless steel clad over 20 gauge galvanized steel
- **Sides**
20 gauge stainless steel
- **Backsplash**
20 gauge stainless steel
- **Back and Bottom**
20 gauge galvanized steel
- **Legs**
1-5/8" tubular 16 gauge stainless steel with grey plastic bullet foot
- **Tube Access (Cold Plate)**
3/4" x 3-1/2" cutout in left side of backsplash
- **Insulation**
Foamed-in-place polyurethane
- **Plumbing**
Cold Plate: 1/2" IPS drain connection
No Cold Plate: 1" IPS drain connection
- **NOTE:** Cold Plate units supplied with 1/2" x 4" male threaded PVC tailpipe

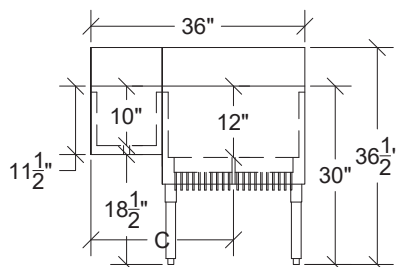
OPTIONAL FEATURES

- **Cold Plate**
Cast aluminum post mix plate with 10 circuits. Plate is sealed into bottom. Each circuit is 5/16" OD stainless steel tubing. Two full with remainder to be half circuits. Bump and swedge fittings on ends

Top View



Front View



Model Numbers	Overall Length A	Ice Bin Length B	Ice Bin Location	Bottles Stored	Left Side to Ice Bin Drain C	Ice Capacity (lbs.)	Cold Plate Circuits	Weight (lbs.)
KR19-M36R	3'-0"	24"	Right	6	24"	80	N/A	95
KR19-M36L	3'-0"	24"	Left	6	12"	80	N/A	95
KR19-M36R-10	3'-0"	24"	Right	6	24"	80	10	172
KR19-M36L-10	3'-0"	24"	Left	6	12"	80	10	172
KR19-M42R	3'-6"	30"	Right	6	27"	97	N/A	108
KR19-M42L	3'-6"	30"	Left	6	15"	97	N/A	108
KR19-M42R-10	3'-6"	30"	Right	6	27"	97	10	185
KR19-M42L-10	3'-6"	30"	Left	6	15"	97	10	185
KR19-M48C	4'-0"	24"	Center	12	24"	80	N/A	116
KR19-M48R	4'-0"	36"	Right	6	30"	115	N/A	116
KR19-M48L	4'-0"	36"	Left	6	18"	115	N/A	116
KR19-M48C-10	4'-0"	24"	Center	12	24"	80	10	193
KR19-M48R-10	4'-0"	36"	Right	6	30"	115	10	193
KR19-M48L-10	4'-0"	36"	Left	6	18"	115	10	193



Conforms to NSF St. 2