

MODULAR BAR DETAIL SPECIFICATIONS



Krowne Metal Corporation
100 Haul Rd. Wayne, NJ 07470
(800) 631-0442

Where **passion** meets **precision.**™

krowne.com

TYPICAL BAR DETAIL SPECIFICATION

Typical Equipment Schedule

No.	Qty	Models	Description	Equipment Remarks
B00	23	KMB	Modular Bar Die System	
B100	1	KR18-T12	Underbar Dry Waste	
B101	1	KR18-MC12	Underbar Mixology Sink	
B102	1	KR18-MD8	Underbar Mixology Sink	
B103	1	KR18-ML12	Underbar Liquor Display	RS-42; KR-521
B104	1	KR18-30-10	Underbar Ice Chest	
B105	1	KR18-ME8	Underbar Ice Chest	
B106	1	KR18-4SH	Underbar Soda Gun Filler	
B107	1	KR18-GSB1	Underbar Glass Rack	RS-48
B108	1	KR18-43R	Underbar Sink	

LED Lights & Outlets

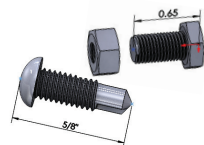
Models	Description
KMB-LK-B	Cool Blue LED Light (1.5 Watts Output)
KMB-LK-W	White LED Light (1.5 Watts Output)
KMB-PS-25	25 Watt Power Supply for up to 10 LED Lights
KMB-PS60	60 Watt Power Supply for up to 25 LED Lights

Tools Required for Installation

It is important to have the following tools on hand before starting the installation.

- Phillips head screw driver
- Level
- Tape measure
- Chalk line
- Power drill
- Shims for leveling
- 7/16 ratchet wrench
- 7/16 box wrench or adjustable wrench
- 1/4" x 7/16 hex head bolts and nuts (used for adjoining modular bar sections to each other).

Fasteners are supplied in a plastic bag with your bar die.

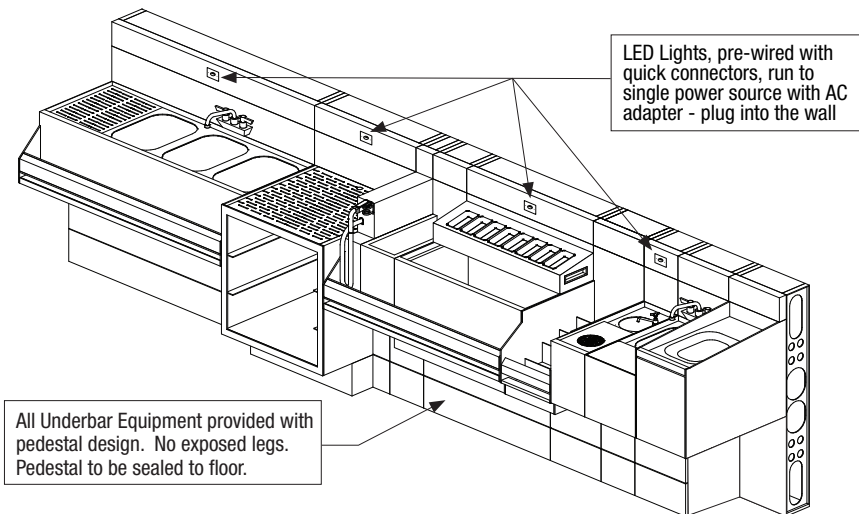
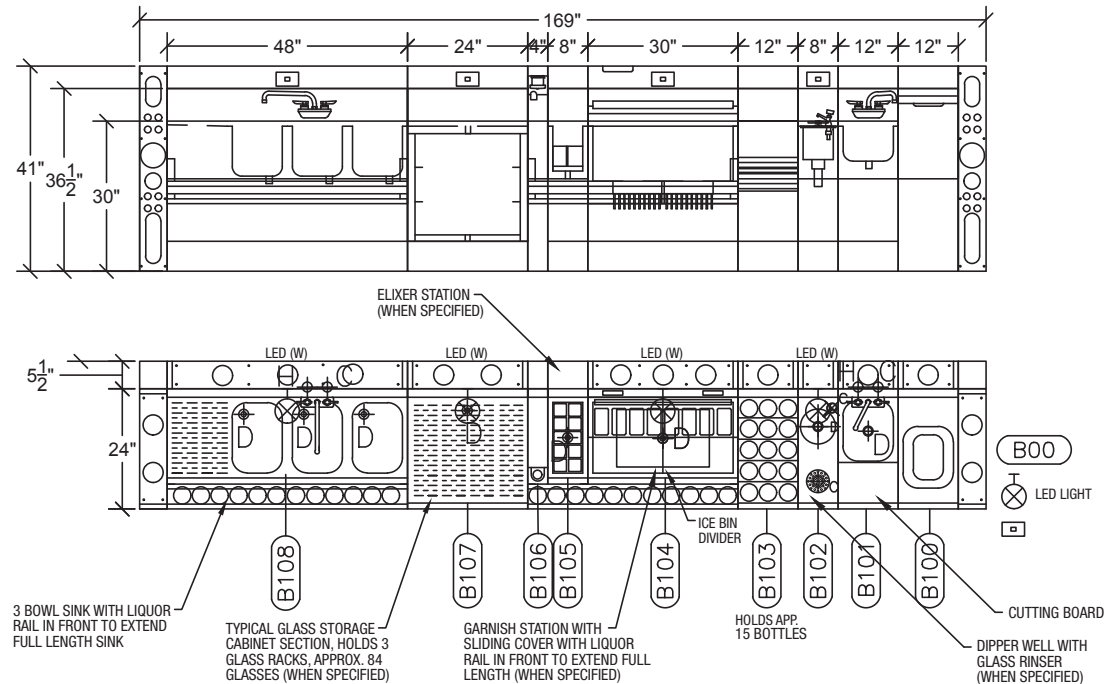


Make sure all screws are facing the same direction when adjoining modular sections for maintenance purposes.

Mylar Template

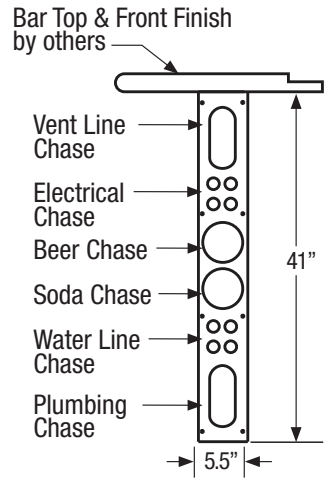
Mylar template to be ordered prior to equipment going into production and is used to locate precise footprint of modular bar equipment. Template is to be sent in sections labeled A thru Z for ease of layout. Template allows for accurate marking of floor drain locations and beer/vent lines along with the added benefit of spatially visualizing your future bar. Mylar sections can be sent in up to 200" in length. Mylar template is optional and incurs an additional charge.

Typical Bar Assembly Detail with Bar Die Wall

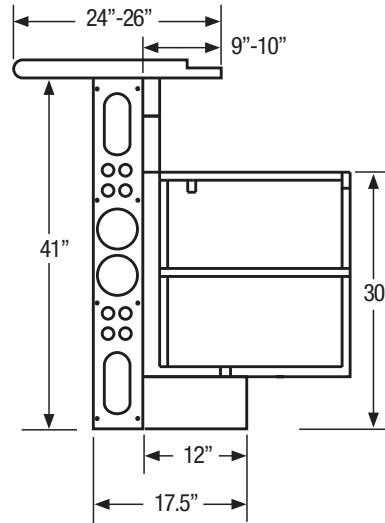


TYPICAL BAR SECTIONS WITH BAR DIE WALL DETAIL

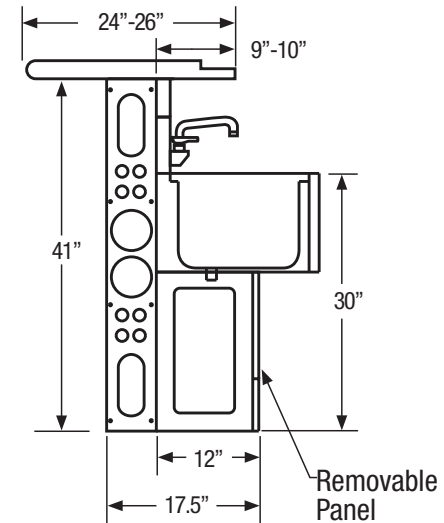
Flat Wall (Side View)



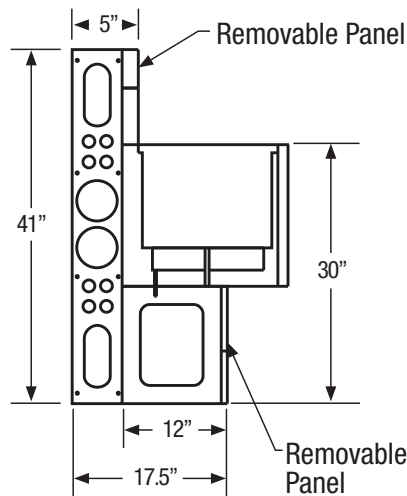
Cabinet (Side View)



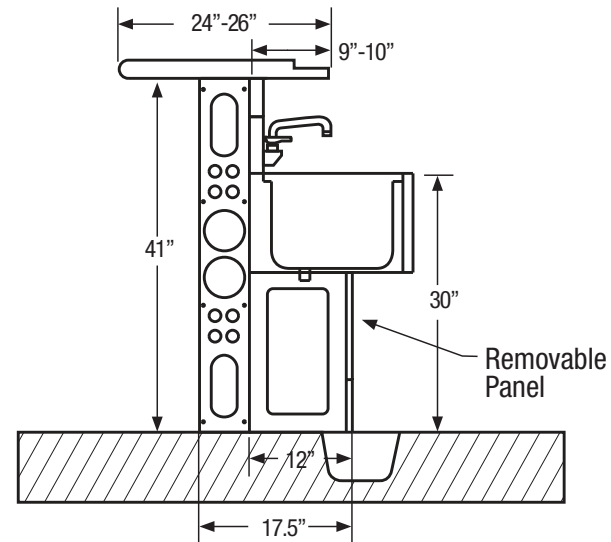
Bar Sink (Side View)



Ice Bin (Side View)



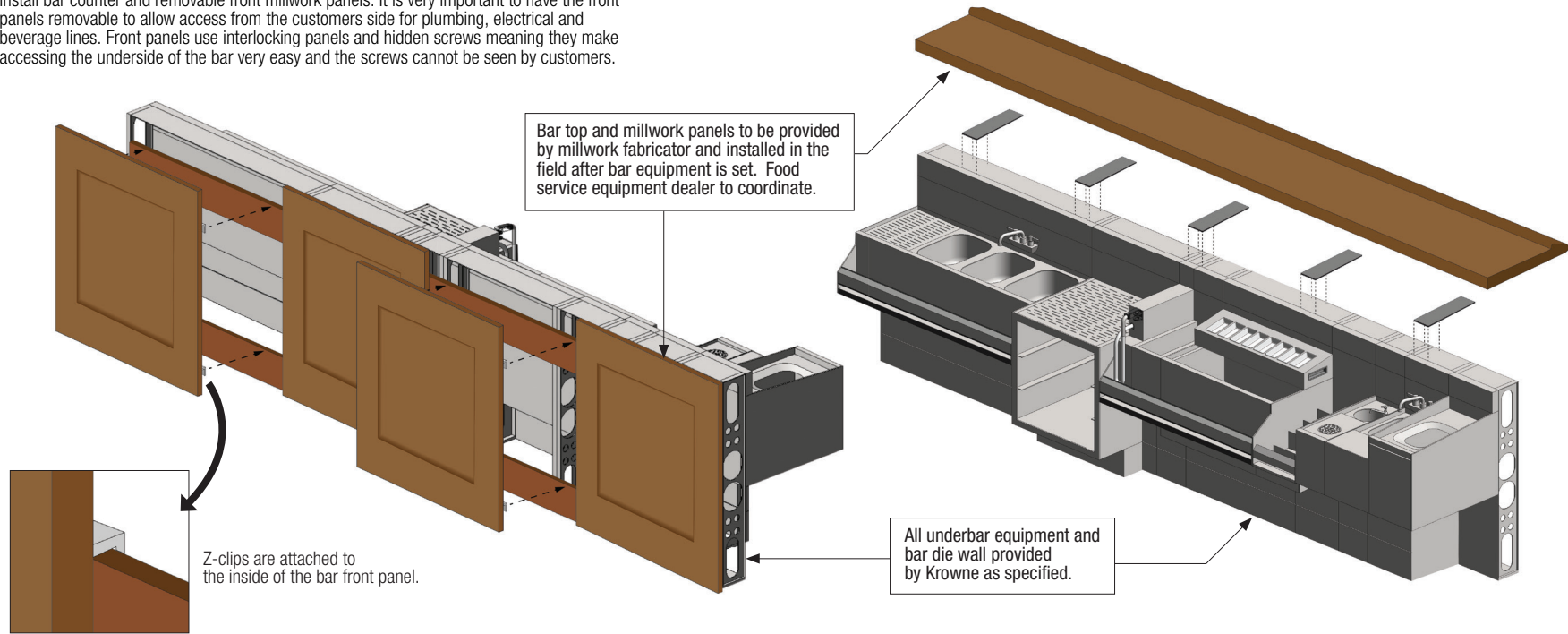
Floor Drain (Side View)



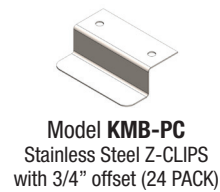
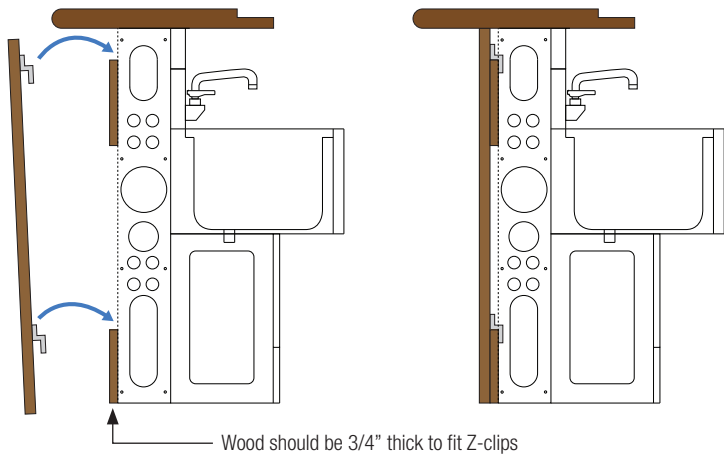
TYPICAL BAR DETAIL SPECIFICATION

Millwork Installation

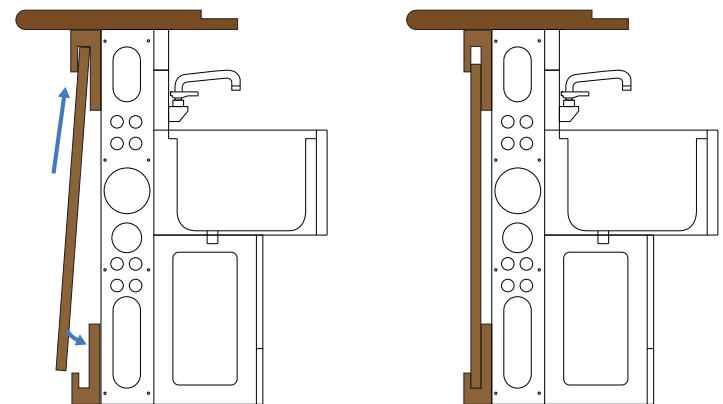
Install bar counter and removable front millwork panels. It is very important to have the front panels removable to allow access from the customers side for plumbing, electrical and beverage lines. Front panels use interlocking panels and hidden screws meaning they make accessing the underside of the bar very easy and the screws cannot be seen by customers.



METHOD A Metal Z-clips are attached to the inside of the bar front panel. Z-clips (KMB-PC) available for purchase.



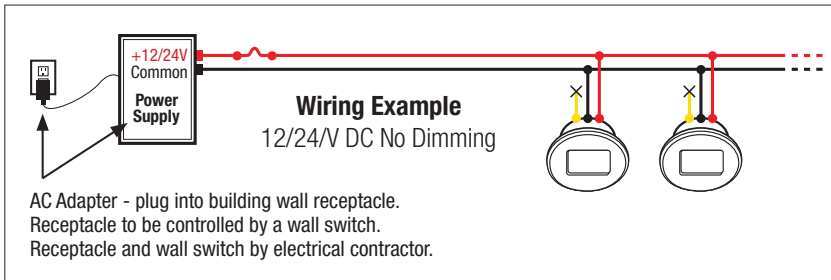
METHOD B Slide panel into channel created by two pieces of wood.



TYPICAL BAR DETAIL SPECIFICATION

LED Light Specifications

Models	v25 Watt Power Supply (KMB-PS-25)	Input Voltage	9-30V DC, 9-15V AC
	60 Watt Power Supply (KMB-PS-60)		Input Power
Features	No glare, down-angled beam	Lumens	17 lms typ @3000 °K
	Rugged and Waterproof		IP Rating
	Brushed Nickel Oval Bezel	Wiring	
	Includes stainless steel pre-punched wall plate, (1) 2" x 4" electrical box		



Modular Bar Die Specifications

Mechanical Specifications

Utility lines: Dedicated chase locations for hot/cold water supply lines, beverage line conduits, and electrical conduit (behind the underbar equipment) this chase is accessible from the floor and runs the entire length of the bar.

Floor drains: Locate floor drains directly below workboard equipment. The number of floor drains will vary depending on the bar layout and local codes.

Utility Specifications

A 5-1/2" open zone is furnished behind the equipment to provide room for trunk lines, soda lines, plumbing, electrical, etc. To travel vertically or horizontally within the bar structure. Connections can be made from the front of the bar with panels removed.

Plumbing Specifications

All water service and waste connections can be made from the front of the bar (decorative front panel removed). Local codes dictate installation (by others).

General Specifications

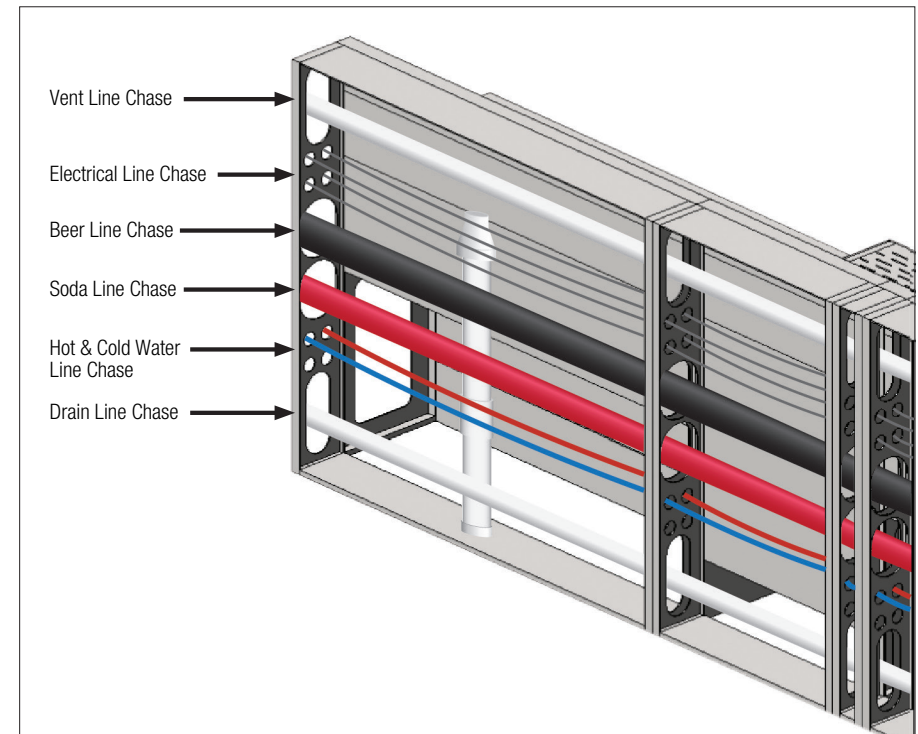
Structure: Configured to the exact size and shape of underbar equipment, freestanding cabinets and openings, as specified.

Chase: Interior chase runs the entire length of the structure including corners.

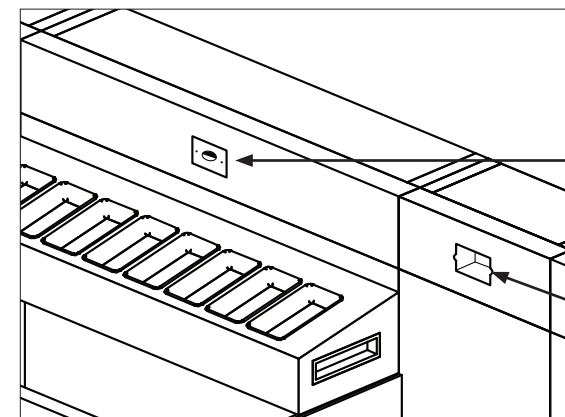
Electrical Specifications

All electrical requirements such as receptacle to blenders, washers, coolers, soda guns, light, etc. (by others).

Modular Bar Die Chaseways



Modular Bar Die Options



Down Acting LED Lights
Pre-wired with quick connectors, run to single power source with AC adapter. Plug into the wall receptacle. Receptacle to be controlled by a wall switch. Receptacle and wall switch by electrical contractor.

Built-in Outlet provision for receptacle to be supplied and installed by electrician. Refer to engineered spec drawing and food service electrical rough-in drawings for receptacle locations.