

Slide Top Bottle Coolers

ROYAL SERIES



BC24-BG



BC24-SS



BC48-BG



BC48-BG

Standard Features

- 34"H x 24" depth (front to back)
- All stainless steel coved corner interior
- Digital thermostat
- Optional LED light kit available
- Heavy duty doors (with optional locks) & center bar construction
- Rugged grab bar handle
- Floor drain connects to condensate evaporator pan
- Removable evaporator drain pan
- Door tracks notched into side walls for added durability
- Removable side panel for easy access to compressor valves
- Pre-drilled bottom for optional casters (uses 1/4-20 self tapping 1/2"L screw)
- R290 Hydrocarbon Refrigerant
- Eco-friendly Refrigerant and Insulation
- This equipment is intended for the storage and display of non-potentially-hazardous bottle or canned products only
- 5 Year Compressor Warranty
- 2 Year Parts & Labor Warranty

Specifications

Electrical	115 V, 1 Phase, 60 Hz
	Furnished with 8' plug-in cord; exits left rear of cooler
	NEMA 5-15P plug configuration
	Dedicated 15 amp circuit recommended
Refrigeration	R290 Hydrocarbon Refrigerant
	30°F - 40°F operating range
	Digital thermostat on front grille
Plumbing	No drain required; Condensate evaporator pan included
Insulation	2" thick foamed-in-place polyurethane
Interior	20 gauge stainless steel walls with coved corners Partitions: adjustable, chrome plated
Exterior	SS Models Front & Sides: 20 gauge stainless steel BG Models Front & Sides: 20 gauge black vinyl
Doors	Heavy duty doors with rugged grab bar handle and optional locks

This equipment is intended for the storage and display of non-potentially hazardous bottle or canned products only.

This equipment is intended for use in an area where the ambient temperature typically does not exceed 75 °F.

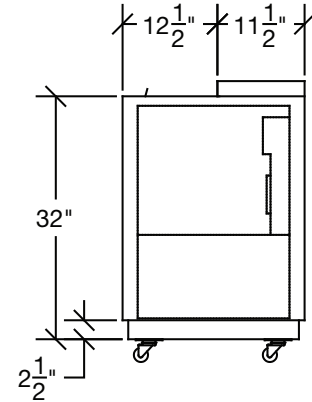
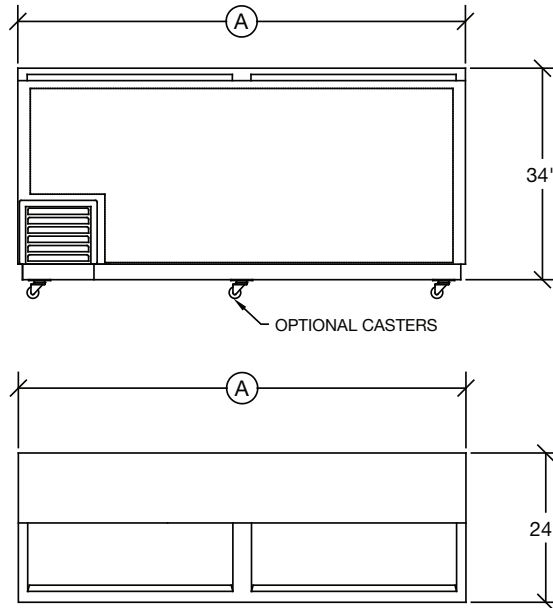
Krowne • 100 Haul Rd. Wayne, NJ 07470 • P: (800) 631-0442 • F: (973) 872-1129 • support@krowne.com • krowne.com

Due to our commitment to continued product improvement, specifications are subject to change without notice.



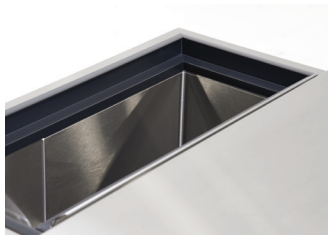
Slide Top Bottle Coolers

ROYAL SERIES



Model	Length (A)	Height	Depth	Exterior	Doors	Case Capacity (12 oz. bottles)	Divider Racks	Amps	Bottle Capacity	HP	Weight
BC24-SS	24"	34"	24"	Stainless Steel	1	6	1	1.53	145	1/5	110 lbs.
BC36-SS	36"	34"	24"	Stainless Steel	1	9.5	1	1.53	225	1/5	124 lbs.
BC48-SS	48"	34"	24"	Stainless Steel	2	15.5	2	2.18	370	1/4	138 lbs.
BC72-SS	72"	34"	24"	Stainless Steel	2	25.5	2	2.53	610	1/4	152 lbs.
BC96-SS	96"	34"	24"	Stainless Steel	3	37	3	2.71	885	1/3	162 lbs.
BC24-BG	24"	34"	24"	Black Vinyl	1	6	1	1.53	145	1/5	171 lbs.
BC36-BG	36"	34"	24"	Black Vinyl	1	9.5	1	1.53	225	1/5	119 lbs.
BC48-BG	48"	34"	24"	Black Vinyl	2	15.5	2	2.18	370	1/4	133 lbs.
BC72-BG	72"	34"	24"	Black Vinyl	2	25.5	2	2.53	610	1/4	148 lbs.
BC96-BG	96"	34"	24"	Black Vinyl	3	37	3	2.71	885	1/3	162 lbs.

Note: Optional casters raise height 1" higher than wheel size.
 Optional door locks BC-619 must be ordered with unit. Cannot be added



Integrated Durable Track System
 Prevents collapsing seen on traditional overhanging track systems



Heavy Gauge Fully Insulated Doors
 Stainless steel construction to withstand heavy loads resting on door.

Set of 4 Casters

Model	Overall Height	Wheel Diameter
BC-130	2"	1"
BC-132	3"	2"
BC-134	4"	3"
BC-136	5"	4"
BC-138	6"	5"

Set of 6 Casters

Model	Overall Height	Wheel Diameter
BC-131	2"	1"
BC-133	3"	2"
BC-135	4"	3"
BC-137	5"	4"
BC-139	6"	5"

