



Model: \_\_\_\_\_ Item #: \_\_\_\_\_ Date: \_\_\_\_\_  
 Project: \_\_\_\_\_ Qty: \_\_\_\_\_ Approved By: \_\_\_\_\_

# Slide Top Bottle Coolers

# Refrigeration



## BC48-SS Shown

Available in Black Vinyl or Stainless Steel

### Standard Features

<b>Electrical</b>	115 V, 1 Phase, 60 Hz. Furnished with 8'-0" plug-in cord, which exits left rear of cooler. NEMA 5-15P Plug Configuration. Dedicated 15 Amp circuit recommended.
<b>Refrigeration</b>	Self-contained 1/3 HP 134A Refrigerant. 30°F-40°F operating range
<b>Interior</b>	Interior Floor: 20 gauge stainless steel (all models) Interior Walls: 20 gauge stainless steel (all models) Partitions: Adjustable, chrome plated
<b>Exterior</b>	BG models - Front & Sides: 20 gauge black vinyl All models - Back: 20 gauge galvanized steel SS models - Front & Sides: 20 gauge stainless steel
<b>Doors</b>	Heavy duty foamed-in-place with rugged grab bar handle and optional locks
<b>Insulation</b>	2" thick foamed-in-place polyurethane
<b>Plumbing</b>	No drain connection required. Condensate evaporator pan included.

### Optional Accessories

<b>BC-100</b>	LED Interior Light Kit
<b>BC-130</b>	Four 1" Ultra Low Profile Casters w/ brakes
<b>BC-131</b>	Six 1" Ultra Low Profile Casters w/ brakes (72" & 96" models)
<b>BC-132</b>	Four 2" Low Profile Casters w/ brakes
<b>BC-133</b>	Six 2" Low Profile Casters w/ brakes (72" & 96" models)
<b>BC-134</b>	Four 3" Casters w/ brakes
<b>BC-135</b>	Six 3" Casters w/ brakes (72" & 96" models)
<b>BC-111</b>	Bottle Opener and Cap Catcher
<b>BC-536</b>	Additional Wire Partition
<b>BC-619</b>	Locks

### Notes

All units come with Stainless steel interior.  
 \*This equipment is intended for the storage and display of non-potentially hazardous bottle or canned products only.\*

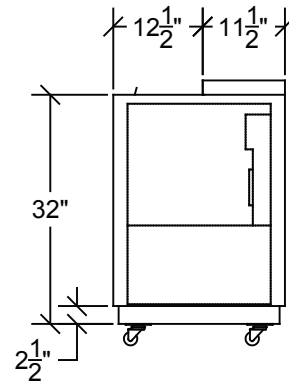
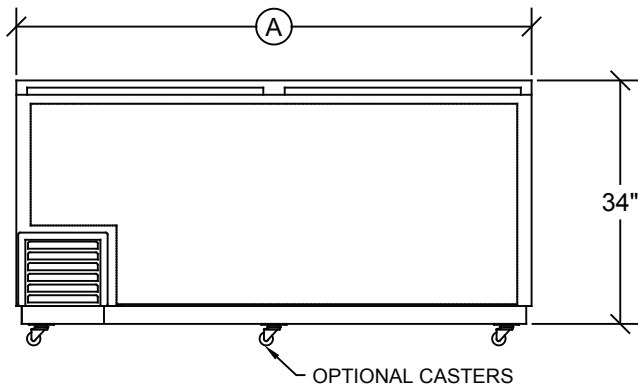
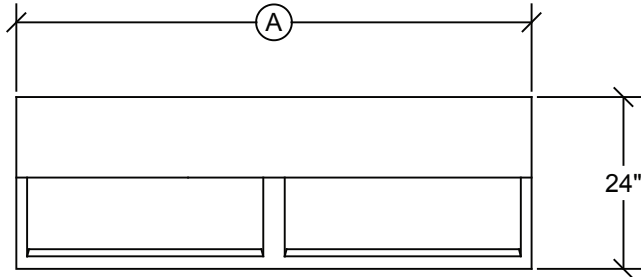




Model: \_\_\_\_\_ Item #: \_\_\_\_\_ Date: \_\_\_\_\_  
 Project: \_\_\_\_\_ Qty: \_\_\_\_\_ Approved By: \_\_\_\_\_

# Slide Top Bottle Coolers

## Refrigeration



Model Numbers	Overall Length	Doors	Exterior Finish (Front & Sides)	Interior Sides	Divider Racks	Case Capacity (12 oz. Bottles)	HP	Full Load Amps	Weight (lbs.)
BC24-BG	2'-0"	1	Black Vinyl	Stainless Steel	1	5	1/5	4.0	204
BC24-SS	2'-0"	1	Stainless Steel	Stainless Steel	1	5	1/5	4.0	204
BC36-BG	3'-0"	1	Black Vinyl	Stainless Steel	2	8	1/5	4.0	220
BC36-SS	3'-0"	1	Stainless Steel	Stainless Steel	2	8	1/5	4.0	220
BC48-BG	4'-0"	2	Black Vinyl	Stainless Steel	3	14 1/2	1/3	5.5	300
BC48-SS	4'-0"	2	Stainless Steel	Stainless Steel	3	14 1/2	1/3	5.5	300
BC72-BG	6'-0"	2	Black Vinyl	Stainless Steel	4	25 1/2	1/3	6.0	405
BC72-SS	6'-0"	2	Stainless Steel	Stainless Steel	4	25 1/2	1/3	6.0	405
BC96-BG	8'-0"	3	Black Vinyl	Stainless Steel	5	35 1/2	1/3	6.6	500
BC96-SS	8'-0"	3	Stainless Steel	Stainless Steel	5	35 1/2	1/3	6.6	500

NOTE: All units come with Stainless Steel Interior

