

Self-Contained Back Bar Refrigeration with Mixing Doors

ROYAL SERIES



BS60L-S-LS-D2

Standard Features

- 35" High without Top, 36" High with 1" Optional Top
- 24" Front to Back Depth (25" with Top)
- Coved corner stainless steel interior
- Heavy duty Self-Closing 24"W Doors
- Stainless steel door handles with built-in locks
- Digital thermostat
- Built-in Cool White LED Lighting (7000K)
- DynamicChill 360° Technology
- Heated mullion to minimize condensation
- Optional dual zone temperature control (60" & 84" only)
- Approved for NSF 7 Open Food Storage
- Pre-drilled bottom for optional legs or casters (uses 1/4-20 self tapping 1/2"L screw)
- Eco-friendly Refrigerant and Insulation
- 5-Year Compressor Warranty
- 2-Year Parts & Labor Warranty

Base Model	Length	Doors	Amps	Bottle Capacity	HP	Weight
BS36	36"	1	1.7	165	1/5	285 lbs.
BS60	60"	2	2.2	375	1/4	360 lbs.
BS84	84"	3	2.7	600	1/3	480 lbs.
BS108	108"	4	2.8	720	1/3	525 lbs.

Specifications

Electrical	115 V, 1 Phase, 60 Hz Furnished with 8' plug-in cord, which exits left or right rear of cooler NEMA 5-15P plug configuration Dedicated 15 amp circuit recommended
Refrigeration	R290 Hydrocarbon Refrigerant 30°F - 40°F operating range Digital thermostat on front grille
Plumbing	No drain required Condensate evaporator pan included
Insulation	2" thick foamed-in-place polyurethane
Interior	20 gauge stainless steel walls with coved corners NSF epoxy coated durable shelves - one bottom and two adjustable shelves per door Integrated divider prevents bottles from falling into sliding drawer
Exterior	Sides: 20 gauge stainless steel Front: 20 gauge stainless steel Top: 20 gauge stainless steel with option of 1" top

Doors

Self-closing 24" doors available in black vinyl, stainless steel, or glass with black vinyl or stainless steel
 19-3/4"W x 29-11/16" H door opening

Sliding Doors

All stainless steel with built-in locks
 One 11" interior height drawer (15-1/2" overall)
 One 13-3/4" internal height drawer (18" overall)
 18" drawer fits standard sized wine bottles standing up
 Soft stop technology
 Load Capacity: up to 175 lbs (80 kg) full extension



Sliding Drawers Available

This equipment is intended for the storage and display of non-potentially hazardous bottle or canned products only.

This equipment is intended for use in an area where the ambient temperature typically does not exceed 75 °F.

Krowne • 100 Haul Rd. Wayne, NJ 07470 • P: (800) 631-0442 • F: (973) 872-1129 • support@krowne.com • krowne.com

Due to our commitment to continued product improvement, specifications are subject to change without notice.

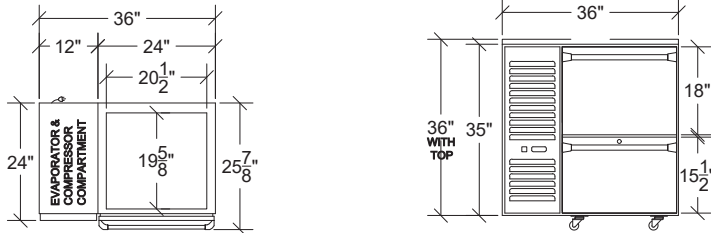
Rev 0 • 2/2026 • No. 1.3A Self-Contained Refrigeration

Self-Contained Back Bar Refrigeration with Mixing Doors

ROYAL SERIES

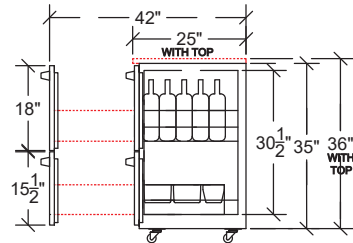
One Door (36")

Models beginning BS36



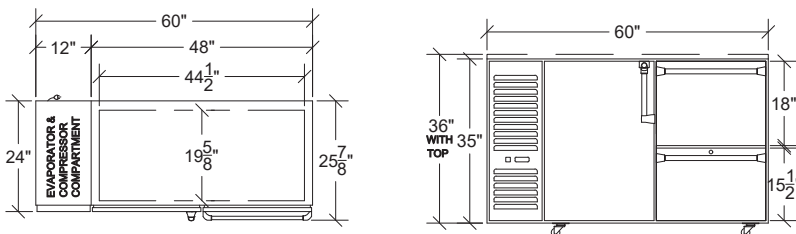
D1 Door Style Side View

18" Drawer on Top, 15-1/2" Drawer on Bottom



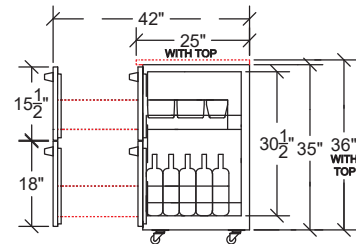
Two Door (60")

Models beginning BS60



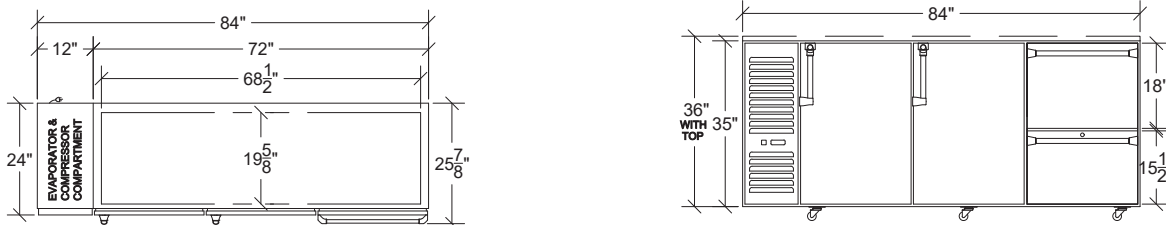
D2 Door Style Side View

15-1/2" Drawer on Top, 18" Drawer on Bottom



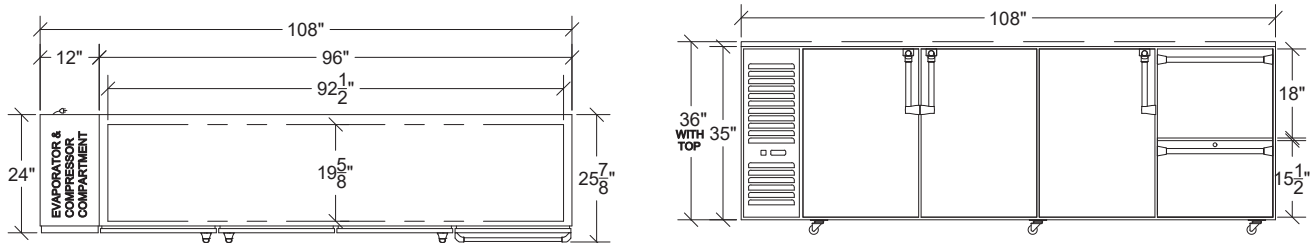
Three Door (84")

Models beginning BS84



Four Door (108")

Models beginning BS108



Note: Optional casters and legs available in several heights



CONFORMS TO UL Std 471 & NSF STD 7