

Front Door Mug Froster/Freezers

ROYAL SERIES



FMC24-SS-R

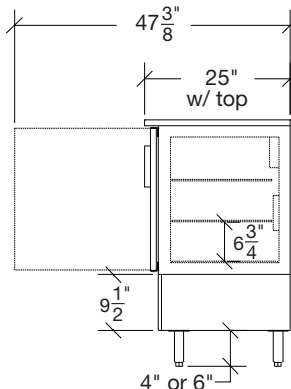
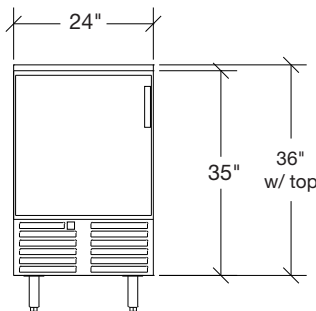
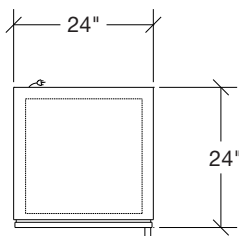
Standard Features

- Fits (90) 10 oz. mugs
- Utilizes automatic coil defrost cycle on evaporator every 4 hours (does not affect temperature in unit; ice unaffected)
- Two (2) stationary wire shelves and floor rack
- Digital thermostat on front grille
- Heavy duty doors with stainless steel handle with built-in lock
- Eco-friendly refrigerant and insulation
- Pre-drilled bottom for optional casters (uses 1/4-20 self tapping 1/2"L screw)
- This equipment is intended for use in an area where the ambient temperature typically does not exceed 75 °F.
- 5-Year Compressor Warranty
- 2-Year Parts & Labor Warranty

Model	Length	Height	Depth	Door Finish	Top Finish	Door Hinge	Weight
FMC24-BN-L	24"	35"	24"	Black Vinyl	Unfinished Top	Left	220 lbs.
FMC24-BN-R	24"	35"	24"	Black Vinyl	Unfinished Top	Right	220 lbs.
FMC24-BS-L	24"	36"	24"	Black Vinyl	1" Stainless Steel Top	Left	244 lbs.
FMC24-BS-R	24"	36"	24"	Black Vinyl	1" Stainless Steel Top	Right	244 lbs.
FMC24-SN-L	24"	35"	24"	Stainless Steel	Unfinished Top	Left	220 lbs.
FMC24-SN-R	24"	35"	24"	Stainless Steel	Unfinished Top	Right	220 lbs.
FMC24-SS-L	24"	36"	24"	Stainless Steel	1" Stainless Steel Top	Left	244 lbs.
FMC24-SS-R	24"	36"	24"	Stainless Steel	1" Stainless Steel Top	Right	244 lbs.

Specifications

Electrical	115 V, 1 Phase, 60 Hz
	Furnished with 8' plug-in cord, which exits left or right rear of cooler
	NEMA 5-15P plug configuration
	Dedicated 15 amp circuit recommended 2.5 amps, 1/3 HP
Refrigeration	R290 Hydrocarbon Refrigerant
	-3°F - 7°F operating range (maintain a temperature of 0°F with a max of 10°F)
Plumbing	Floor drain connects to condensate evaporator pan. No drain required
Insulation	2" thick foamed-in-place polyurethane
Interior	20 gauge stainless steel walls with coved corners Standard door opening: 19-3/4"W x 24-3/4"H
Exterior	Stainless steel or black vinyl
Doors	24"W doors
	Black vinyl or stainless steel door finish
	Stainless steel handles with built-in locks



This equipment is intended for the storage and display of non-potentially hazardous bottle or canned products only.

This equipment is intended for use in an area where the ambient temperature typically does not exceed 75 °F.

Krowne • 100 Haul Rd. Wayne, NJ 07470 • P: (800) 631-0442 • F: (973) 872-1129 • support@krowne.com • krowne.com

Due to our commitment to continued product improvement, specifications are subject to change without notice.

Rev 0 • 2/2026 • No. 1.8 Mug Froster/Freezer