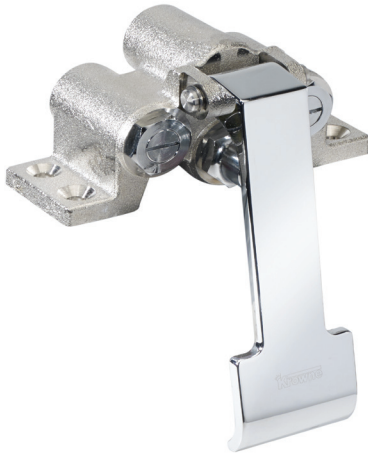


Single Pedal Knee Valve

ROYAL SERIES



Standard Features

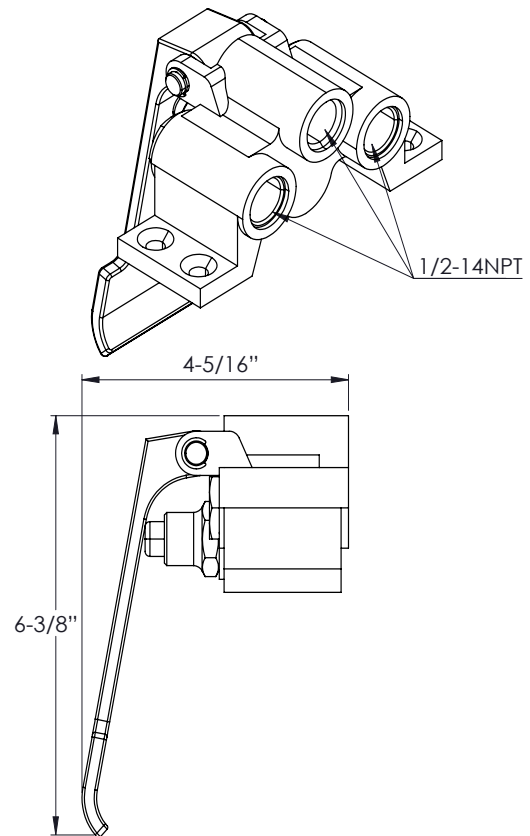
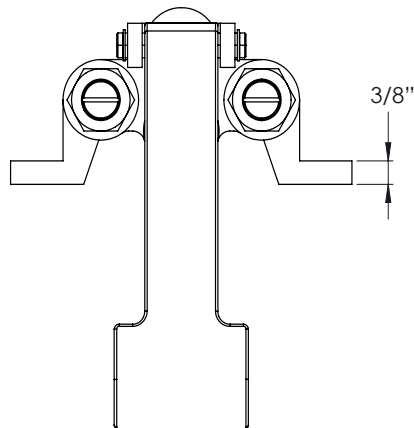
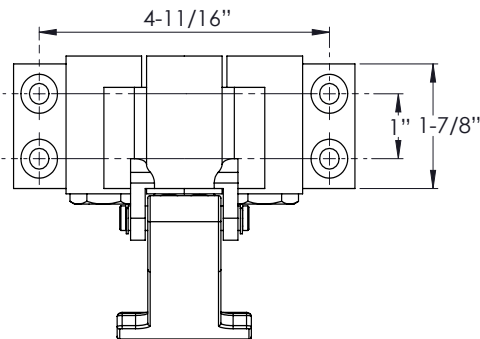
- Self-closing valve
- Built-in flow control on hot and cold valves
- 1/2" female inlets
- 1/2" outlet
- Built-in check valves
- Adjust temperature by using flow control valves

Product Compliance

- NSF-61 & NSF/ANSI 372
- NSF/ANSI/CAN 61: Q < 1
- ASME A112.18.1-2012/CSA B125.1-12
- Massachusetts Listed



Model	Description
16-406L	Single Pedal Knee Valve



Warning:

Plumbing connections should be made by qualified personnel who will observe all applicable plumbing, sanitary and safety codes

California Prop 65 Warning:

This product can expose you to chemicals including lead and lead compounds, which are known to the State of California to cause cancer and birth defects or other reproductive harm. For more information go to www.cdph.ca.gov/Programs/CID/DCDC/Pages/ToxicSubstances/HazardousSubstances.aspx