



Jet Rinser Installation Manual

16-440



WARNING: Plumbing connections should be made by qualified personnel who will observe all applicable plumbing, sanitary and safety codes.

Item Callout

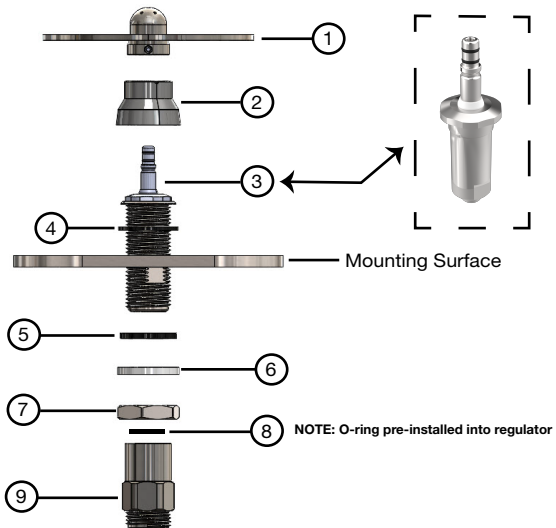
- 1 - Rinser Plate
- 2 - Rubber Sleeve
- 3 - Cartridge Valve
- 4 - Thin o-ring
- 5 - Thick o-ring
- 6 - Nylon washer
- 7 - Locknut
- 8 - Pressure regulator o-ring
- 9 - Pressure regulator (21PSI)

Suggested Tools

- 2x Adjustable wrench

Replacement Parts

- 16-441: Item 1 & 2
- 16-442: Item 3
- 16-443: Item 4, 5, 6 & 7



Installation Instructions

1. Turn off water supply at main source before proceeding with install
2. Before inserting the rinser valve in the mounting surface hole, ensure the thin o-ring (4) is already installed
Note: Suggested mounting surface hole diameter 7/8"
3. From underneath mounting surface, install thick o-ring (5), nylon washer (6), locknut (7), pressure regulator o-ring (8) and pressure regulator (9) in that order
Note: Pressure regulator o-ring is pre-installed into the regulator itself
Note: Use adjustable wrench on flat edges of shank to keep assembly fixed
4. Apply teflon tape onto the end of the pressure regulator (9) to NPS supply water line
5. Slip on rubber sleeve (2) to bottom of rinser plate (1)
6. Place rinser plate (1) onto rinser valve stem and push down until a click is felt/heard
7. Turn on main water supply

Your Jet Rinser is now ready to use!