

Jet Rinser Installation Manual

16-440



WARNING: Plumbing connections should be made by qualified personnel who will observe all applicable plumbing, sanitary, and safety codes.

Item Callout

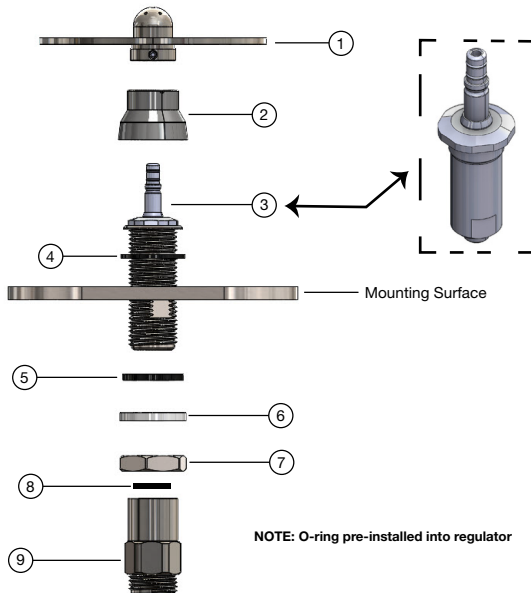
- 1 - Rinser Plate
- 2 - Rubber Sleeve
- 3 - Cartridge Valve
- 4 - Thin o-ring
- 5 - Thick o-ring
- 6 - Nylon washer
- 7 - Locknut
- 8 - Pressure regulator o-ring
- 9 - Pressure regulator (21PSI)

Suggested Tools

- 2x Adjustable wrench

Replacement Parts

- 16-441: Item 1 & 2
- 16-442: Item 3
- 16-443: Item 4, 5, 6 & 7
- 16-444: Item 8 & 9



Installation Instructions

1. Turn off water supply at main source before proceeding with install
2. Before inserting the rinser valve in the mounting surface hole, ensure the thin o-ring (4) is already installed

Note: Suggested mounting surface hole diameter 7/8"

3. From underneath mounting surface, install thick o-ring (5), nylon washer (6), locknut (7), pressure regulator o-ring (8) and pressure regulator (9) in that order

Note: Pressure regulator o-ring is pre-installed into the regulator itself

Note: Use adjustable wrench on flat edges of shank to keep assembly fixed

4. Apply teflon tape onto the end of the pressure regulator and connect 1/2" NPS supply water line
5. Slip on rubber sleeve (2) to bottom of rinser plate (1)
6. Place rinser plate (1) onto rinser valve stem and push down until a click is felt/heard
7. Turn on main water supply

Your Jet Rinser is now ready to use!