

Single Hole Wall Mount Straight Faucet

ROYAL SERIES



Model	Description
16-655	Single Hole Wall Mount Straight Faucet, Chrome Finish, and 2.2 GPM Aerator Installed

Standard Features

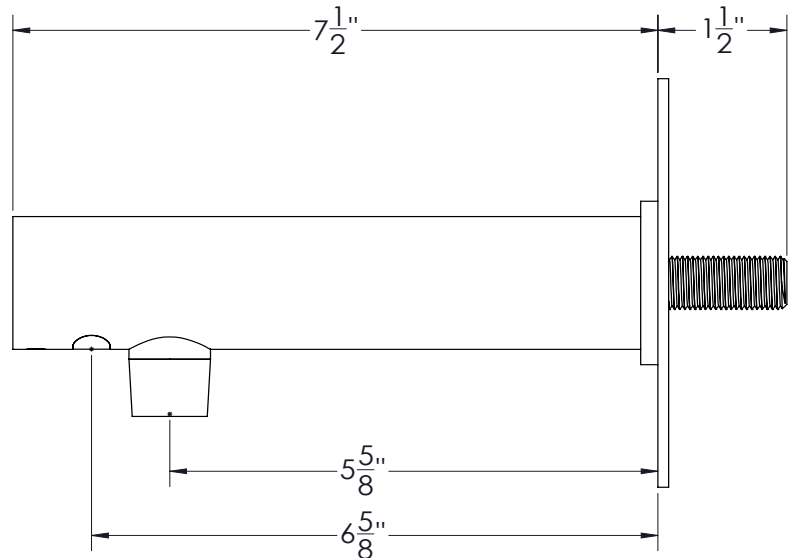
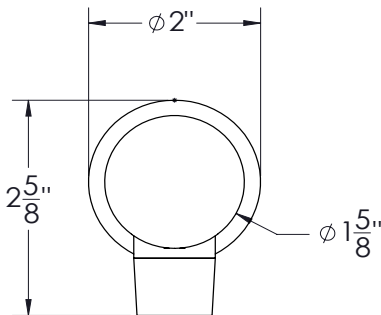
- Infrared sensor operated
- Includes built-in battery powered control module
- Includes Faucet, Mechanical Mixing Valve, (3) Supply Lines, 1/2" x 1/2" Debris Filter and (4) AA batteries (not installed)
- Sensor operating range 3/4" to 7-3/4", factory set at 6"
- Low Battery Indicator Light
- Battery Life 1-3 Years Based on Usage

Specifications

Water Inlet	1/2" NPS Male
Temp. Range	32°F - 185°F
Rough In	7/8" round hole
Flow Rate	2.2 GPM
Material	Stainless steel 304
Weight	2 lbs.

Product Compliance

- NSF/ANSI/CAN 61 Q<1



Warning:

Plumbing connections should be made by qualified personnel who will observe all applicable plumbing, sanitary and safety codes

California Prop 65 Warning:

This product can expose you to chemicals including lead and lead compounds, which are known to the State of California to cause cancer and birth defects or other reproductive harm. For more information go to www.cdph.ca.gov/Programs/CID/DCDC/Pages/ToxicSubstances/HazardousSubstances.aspx