

## Utility Spray with Add-On Faucet

ROYAL SERIES



| Model   | Description                                   |
|---------|---|
| 19-112L | Royal Series Utility Spray with Add-On Faucet |

### Product Compliance

- NSF-61 & NSF/ANSI 372
- NSF/ANSI/CAN 61: Q<1
- ASME A112.18.1-2011/CSA B125.1-11
- Massachusetts Listed
- CEC Listed

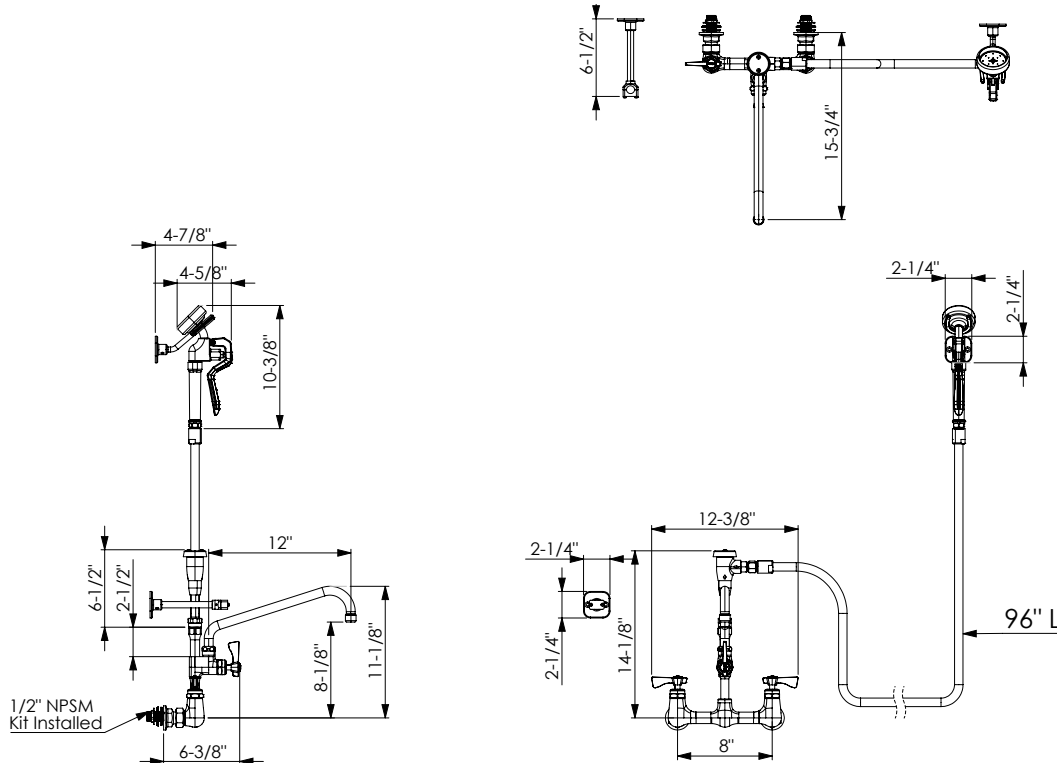


### Standard Features

- 1/4 turn high performance ceramic cartridge valves with integral check
- Add-on faucet with 12" spout
- 96" L hose with angled pre-rinse spray head
- Built-in vacuum breaker
- Wall hook and wall mount included
- Mounting kit (21-194L) includes (2) locknuts, (2) rossette washers, (2) rubber o-rings and (2) shanks
- Full replacement parts available
- 3 year warranty

### Specifications

|                |   |
|----------------|---|
| Water Inlet    | 1/2" NPS Male; Kit Installed              |
| Rough In       | 7/8" Round Holes                          |
| Mounting Style | Wall Mount                                |
| Temp. Range    | 40° - 180°F                               |
| Material       | Chrome Plated Brass                       |
| Flow Rate      | 1.8 GPM (Spout)<br>3.18 GPM (Spray Valve) |
| Weight         | 15 lbs.                                   |



#### Warning:

Plumbing connections should be made by qualified personnel who will observe all applicable plumbing, sanitary and safety codes

#### California Prop 65 Warning:

This product can expose you to chemicals including lead and lead compounds, which are known to the State of California to cause cancer and birth defects or other reproductive harm. For more information go to [www.cdph.ca.gov/Programs/CID/DCDC/Pages/ToxicSubstances/HazardousSubstances.aspx](http://www.cdph.ca.gov/Programs/CID/DCDC/Pages/ToxicSubstances/HazardousSubstances.aspx)