



Model: \_\_\_\_\_ Item #: \_\_\_\_\_ Date: \_\_\_\_\_

Project: \_\_\_\_\_ Qty: \_\_\_\_\_ Approved By: \_\_\_\_\_

## Single Handle Kitchen Faucet with Exposed Spring

HOME



19-401B



19-401C



19-401G



19-401S

Can be installed with or without included 8" deck plate.

Model	Description
19-401B	Single Handle Kitchen Faucet, Matte Black Finish
19-401C	Single Handle Kitchen Faucet, Chrome Finish
19-401G	Single Handle Kitchen Faucet, Brushed Gold Finish
19-401S	Single Handle Kitchen Faucet, Satin Finish

### Product Certifications

- NSF/ANSI/CAN 372-2022

#### WARNING:

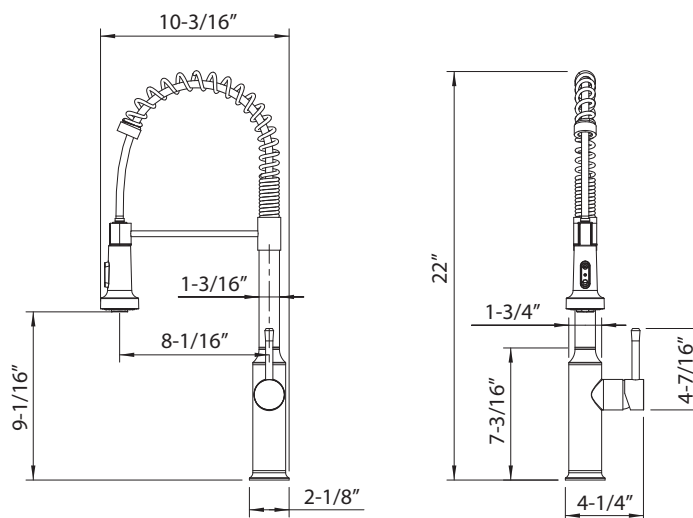
Plumbing connections should be made by qualified personnel who will observe all applicable plumbing, sanitary and safety codes.

### Standard Features

- Pull down exposed spray wand with the ability to easily switch between three spray modes: stream, shower, or a quick fan burst for easily removing tough, caked on food and debris.
- Beehive for aerator helps reduce splash back
- 304 stainless steel, environmentally friendly material
- 8" deck plate included (faucet can be installed with or without 8" deck plate)
- Available in a variety of finishes: chrome, satin, matte black, brushed gold
- Quick and easy installation
- 5 year warranty

### Specifications

Water Inlet	1-9/16"
Temp. Range	41° - 185°F
Operating Pressure	1.4 MPa (200 PSI)
Water Endurance Pressure	3.5 MPa (500 PSI)
Flow Rate	2.2 GPM
Material	Stainless Steel 304
Weight	6 lbs.
Dimensions	2-1/2"W x 10-1/2"D x 17-7/16"H



#### California Prop 65 Warning:

This product can expose you to chemicals including lead and lead compounds, which are known to the State of California to cause cancer and birth defects or other reproductive harm. For more information go to [www.P65Warnings.ca.gov](http://www.P65Warnings.ca.gov).