

Angled Spray Valve for Pet Grooming Faucets

Pet Grooming



Standard Features

- Lightweight aluminum body reduces hand strain over long periods of use
- Easy on/off spray control with a smooth, responsive trigger mechanism
- Safe for frequent use around animals and compliant with sanitation standards
- Angled spray head design improves control and enhances comfort

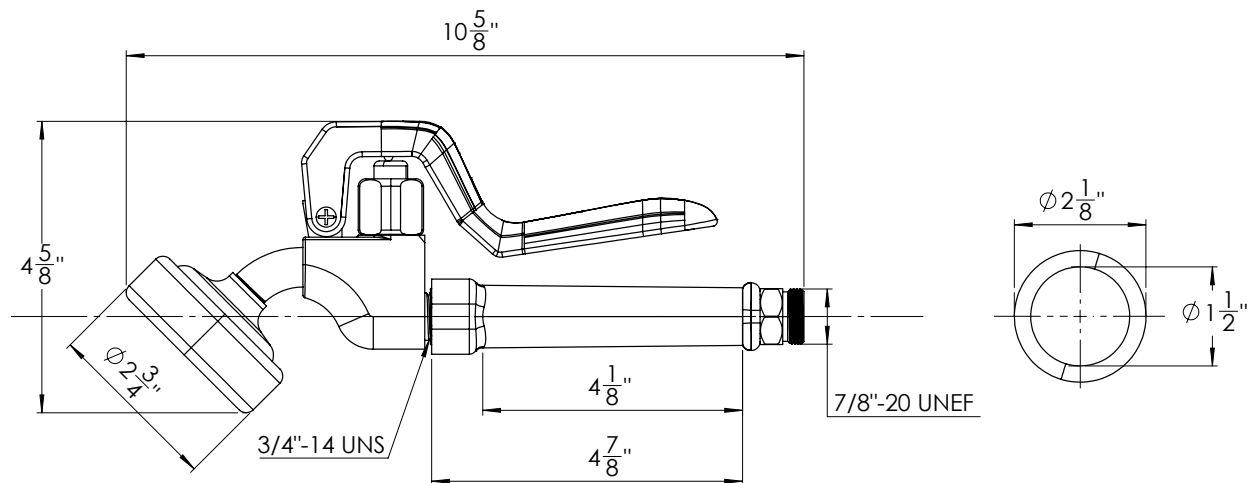
Specifications

Inlet Connection	▪ 7/8"-20 UNEF
Temp. Range	▪ 40°F ~ 140°F
Body Mat.	▪ Aluminum
Flow Rate	▪ 3.18 GPM @ 60 PSI
Weight	▪ 1.5 lbs

Model	Description
21-210	Angled Spray Valve for Pet Grooming Faucets

Product Compliance

- NSF/ANSI 372
- NSF/ANSI/CAN 61: Q < 1
- ASME A112.18.1-2018/CSA B125.1-18



Warning:

Plumbing connections should be made by qualified personnel who will observe all applicable plumbing, sanitary and safety codes

California Prop 65 Warning:

This product can expose you to chemicals including lead and lead compounds, which are known to the State of California to cause cancer and birth defects or other reproductive harm. For more information go to www.P65Warnings.ca.gov.