

Overflow Pipes for Bar Sinks

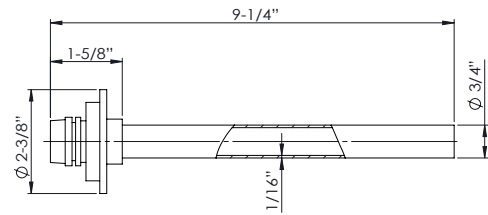
ROYAL SERIES

Model	Description	Sink/Drain Fittings	Material	Overall Height	Weight
23-150	Universal Plastic Overflow Pipe for Bar Sinks	Fits all 1", 1-1/4", 1-1/2" drains	Plastic	8-1/2"	1 lbs.
23-151	Universal Stainless Overflow Pipe for Bar Sinks	Fits all 1", 1-1/4", 1-1/2" drains	Stainless Steel	8-1/2"	0.5 lbs.
23-154	1" Metal Overflow Pipe for Bar Sinks	Fits 1" drains	Metal	8-1/2"	0.5 lbs.
23-155	1-1/4" Metal Overflow Pipe for Bar Sinks	Fits 1-1/4" drains	Metal	8-1/2"	0.5 lbs.
23-156	1-1/2" Metal Overflow Pipe for Bar Sinks	Fits 1-1/2" drains	Metal	8-1/2"	0.5 lbs.



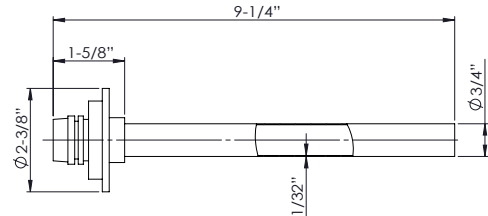
Model 23-150

- Heavy duty rubber grommet



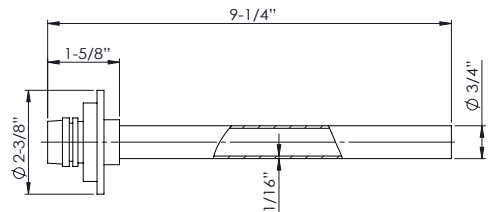
Model 23-151

- Heavy duty rubber grommet



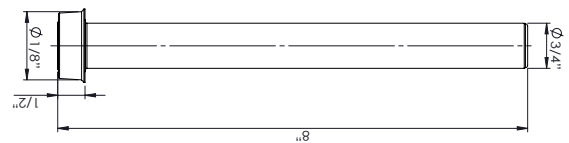
Model 23-154

- 1" metal overflow pipe with rubber grommet



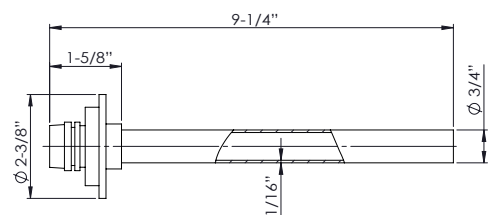
Model 23-155

- 1-1/4" metal overflow pipe with rubber grommet
- Fits old style Krowne slanted top drains



Model 23-156

- Fits most manufacturers
- 1-1/2" metal overflow pipe with rubber grommet



Warning:

Plumbing connections should be made by qualified personnel who will observe all applicable plumbing, sanitary and safety codes

California Prop 65 Warning:

This product can expose you to chemicals including lead and lead compounds, which are known to the State of California to cause cancer and birth defects or other reproductive harm. For more information go to www.P65Warnings.ca.gov.