

Drop-In Water Stations

ROYAL SERIES

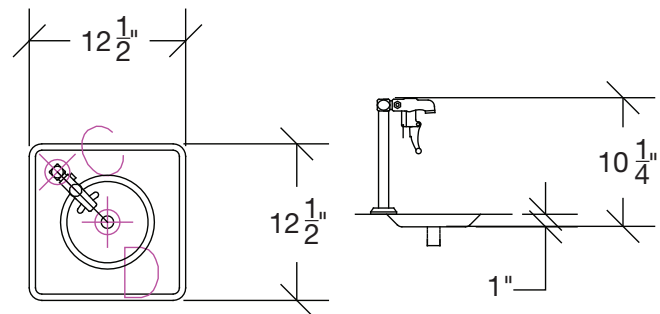


WS-1

Model	Description
WS-1	Drop-In Water Station

Standard Features

- Push back glass filler included (8" high from deck to spout tip)
- Adjustable flow with continuous on position
- 12-1/2"L x 12-1/2"W
- 10-1/4" overall depth
- 11" x 11" cutout size
- 1/2" IPS water inlet
- 1/2" NPS nickel plated brass drain
- Heavy duty stainless steel wire grid
- Optional upgrade to 12"H glass filler
- Weight: 5 lbs.



WS-2

Model	Description
WS-2	Drop-In Water/Ice Station

Standard Features

- Push back glass filler included (8" high from deck to spout tip)
- Adjustable flow with continuous on position
- 27"L x 20"W x 12" deep
- 21-1/4" overall depth
- 25-1/4" x 18-1/4" cutout size
- 1-1/4" drain (23-120)
- 1/2" IPS male water inlet
- Heavy duty stainless steel wire grid
- Ice Capacity: 50 lbs.
- Weight: 40 lbs.

