

## Full Length Speed Rails

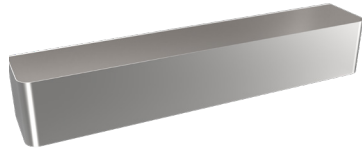
SILVER SERIES

### Standard Features

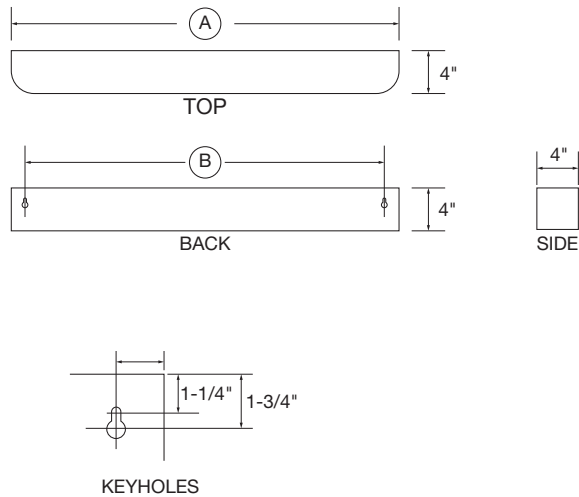
- Full length speed rails allow for maximum bottle storage
- 20 gauge stainless steel
- Easy to mount with keyhole slots (units 36" have a 3rd keyhole slot in center for added support)
- Holds standard and liter size bottles
- Mounting hardware required (#10 sheel metal screws 5/8" long)
- Double speed rails include two levels for added capacity, rear bottles raised 2"

### Single Tier Speed Rails

Model	Overall Length (A)	Keyhole Centers (B)	Bottle Capacity	Weight
S-18	18"	15-1/2"	6	3 lbs.
S-24	24"	21-1/2"	7	4 lbs.
S-30	30"	27-1/2"	9	4 lbs.
S-36	36"	33-1/2"	10	5 lbs.



S-24 shown



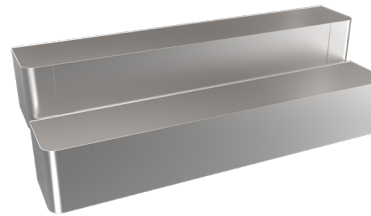
### Product Compliance

- NSF-2

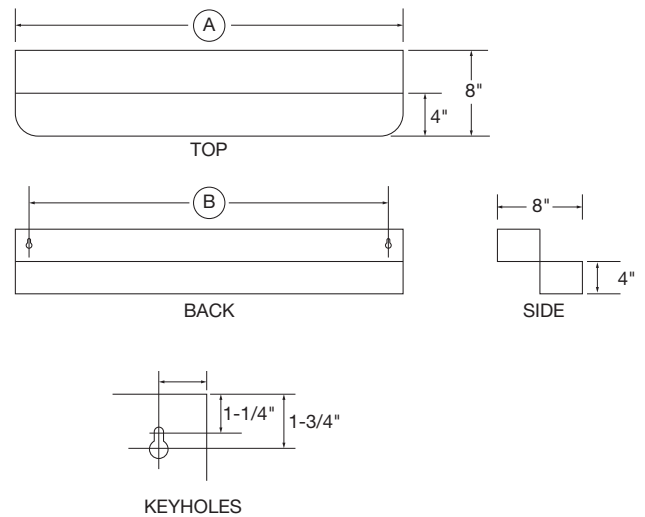


### Double Tier Speed Rails

Model	Overall Length (A)	Keyhole Centers (B)	Bottle Capacity	Weight
D-18	18"	15-1/2"	12	6 lbs.
D-24	24"	21-1/2"	14	8 lbs.
D-30	30"	27-1/2"	18	10 lbs.
D-36	36"	33-1/2"	20	12 lbs.



D-24 shown



#### Warning:

Plumbing connections should be made by qualified personnel who will observe all applicable plumbing, sanitary and safety codes

#### California Prop 65 Warning:

This product can expose you to chemicals including lead and lead compounds, which are known to the State of California to cause cancer and birth defects or other reproductive harm. For more information