

One Compartment Bar Sink

ROYAL SERIES



KR19-31C

Standard Features

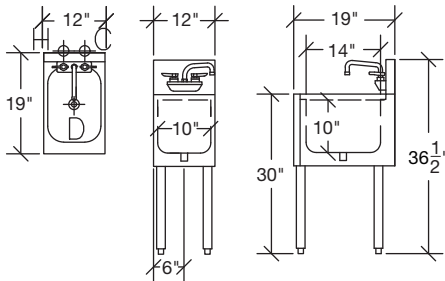
- Royal series faucets & drains w/ overflows included
- Models ending 'DS' include plastic perforated basket (30-160)
- 1-1/2" left rear corner drains (Model 23-122)
- (1) bowl per unit, located in the center of the unit

Specifications

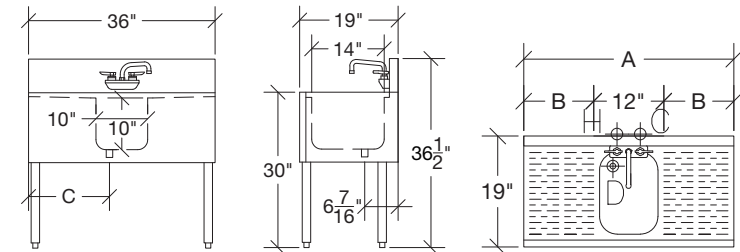
Sink Bowl	20 gauge stainless steel 10" x 14" x 10" deep Furnished with 1-1/2" IPS rear corner drain and 7-1/2" overflow pipe
Material	Front Apron: 20 gauge stainless steel clad over 20 gauge galvanized steel Sides: 20 gauge stainless steel Backsplash: 20 gauge stainless steel Back & Bottom: 20 gauge galvanized steel Drainboard: 20 gauge stainless steel reinforced with welded braces every 6"
Legs	1-5/8" tubular 16 gauge stainless steel with grey plastic bullet foot
Plumbing	Hot/Cold Water: 1/2" IPS Drain: 1-1/2" IPS
Faucets	KR19-1C, KR19-12DS, KR19-31C, KR24-1C, KR24-12DS: 4" center wall mount faucet (14-406L) KR24-31C: 4" center deck mount faucet (15-306L) KR19-1C-E, KR24-1C-E: 4" center wall mount sensor faucet (16-670)

Model	Depth	Length (A)	Drainboard Size (B)	Left Side to Drain (B)	Weight
KR19-1C	19"	12"	-	6"	40 lbs.
KR19-1C-E	19"	12"	-	6"	40 lbs.
KR19-12DS	19"	12"	-	6"	40 lbs.
KR19-31C	19"	36"	(2) 12"	16"	48 lbs.
KR24-1C	24"	12"	-	6"	45 lbs.
KR24-1C-E	24"	12"	-	6"	45 lbs.
KR24-12DS	24"	12"	-	6"	45 lbs.
KR24-31C	24"	36"	(2) 12"	16"	53 lbs.

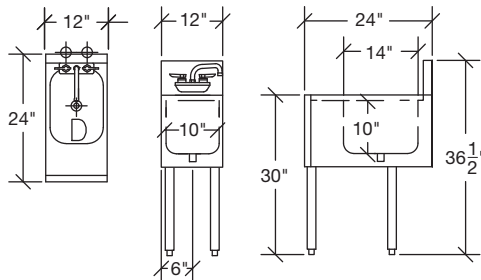
KR19-1C



KR19-31C & KR19-12DS



KR24-1C



KR24-31C & KR24-12DS

