

60" - 72" Workstations

ROYAL SERIES



KR24-W66A-10

Standard Features

- All stations are 24" depth front-to-back
- 12" deep ice bin with built-in 10-circuit cold plate that includes 1/2" x 6" PVC tailpiece (1/2"- 20 male threaded)
- 12" or 18" blender dump sink with royal series faucet
- Raised liquor display for bottle storage
- Insulated bottle section
- Sound deadened single speed rail
- Side splash between ice bin and dump sink
- Ships full assembled for easy installation
- Removable bottle wells

Specifications

Materials	Interior (Ice Bin): 20 gauge stainless steel. 12" deep ice bin section. 10" deep bottle section Blender Shelf: 22 gauge stainless steel Dump Sink (Blender): 20 gauge stainless steel Drainboard: 20 gauge stainless steel Front Apron: 20 gauge stainless steel clad over 20 gauge galvanized steel Backsplash: 20 gauge stainless steel Back & Bottom: 20 gauge galvanized steel
Drains & Plumbing	Hot & Cold Water: 1/2" IPS With Cold Plate: 1/2" IPS Drain connection, 4" PVC tailpiece provided. Drainboard: 1" IPS drain connection Dump Sink: 1-1/2" IPS drain connection
Cold Plate	Cast aluminum post mix plate with 10 circuits. Each circuit is 5/16" OD stainless steel tubing
Tubing Access (Cold Plate)	3/4" x 3-1/2" cutout in left side of backsplash
Bowl Size (Dump Sink)	12"W Dump Sink bowl size: 10" x 12" x 7" 18"W Dump Sink bowl size: 14" x 10" x 7"
Electrical (Blender)	Duplex outlet located underneath blender shelf
Insulation (Ice Bin)	Foamed-in-place polyurethane
Faucet	4" center wall mount faucet with 1/4 turn ceramic cartridge valves (14-406L)
Backsplash	6-1/2"H x 1-1/2"D
Side Splash	Included when Ice Bin is adjacent to Blender Dump Sink
Legs	1-5/8" tubular 16 gauge stainless steel legs with grey plastic bullet foot

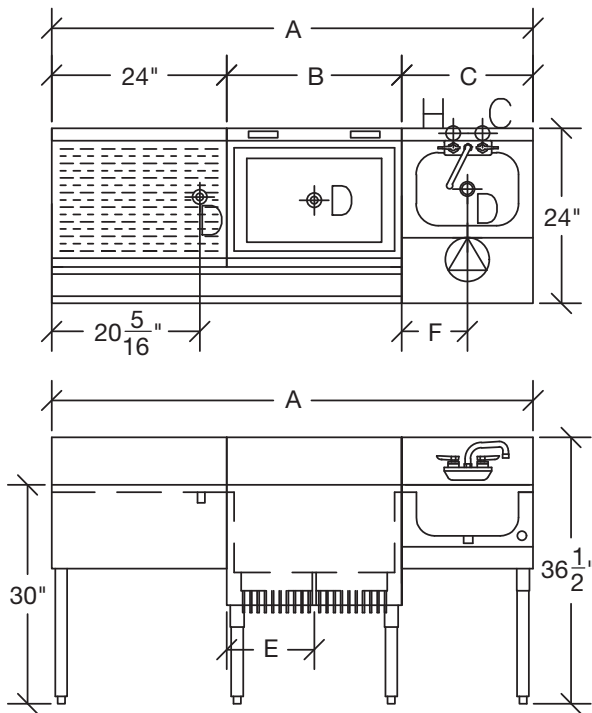
60" - 72" Workstations

ROYAL SERIES

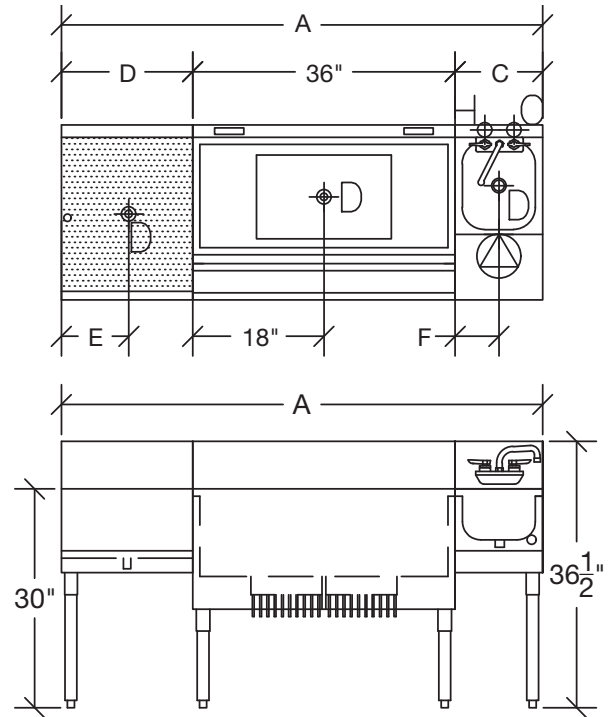
Drainboard Workstations

Model	Overall Length (A)	Ice Bin Length (B)	Blender Dump Sink Length (C)	Drainboard Length (D)	Ice Bin Drain (E)	Blender Drain Location (F)	Drainboard Style	Ice Capacity (lbs.)	Weight
KR24-W60A-10	60"	24"	12"	24"	12"	6"	Standard	74	216 lbs.
KR24-W66A-10	66"	24"	18"	24"	12"	9"	Standard	74	216 lbs.
KR24-W72A-10	72"	30"	18"	24"	15"	9"	Standard	92	236 lbs.
KR24-W60B-10	60"	36"	12"	12"	18"	6"	Recessed	110	236 lbs.
KR24-W66B-10	66"	36"	12"	18"	18"	6"	Recessed	110	251 lbs.
KR24-W72B-10	72"	36"	18"	18"	18"	9"	Recessed	110	251 lbs.

Standard Drainboard Workstation



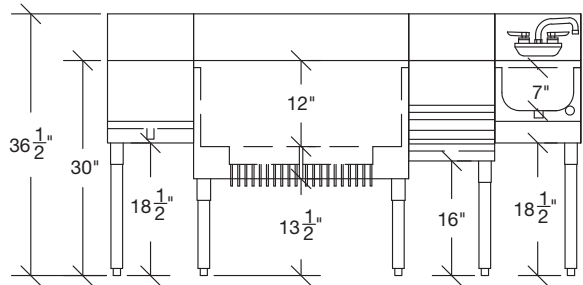
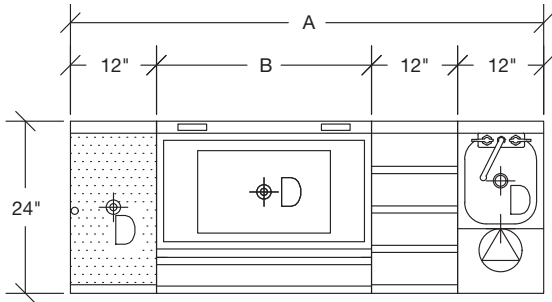
Recessed Drainboard Workstation



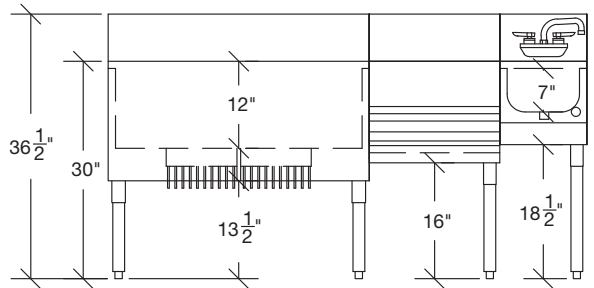
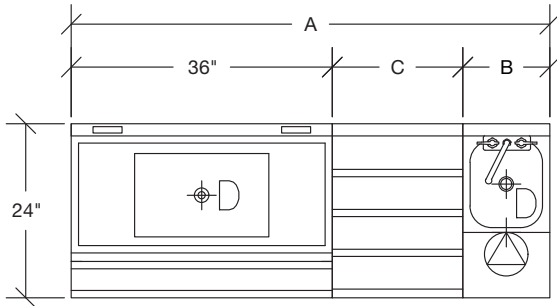
60" - 72" Workstations

ROYAL SERIES

Model	Overall Length (A)	Ice Bin Length (B)	Blender Dump Sink Length	Drainboard Length	Liquor Display Length	Ice Capacity (lbs.)	Weight
KR24-W60C-10	60"	24"	12"	12"	12"	74	262 lbs.
KR24-W66C-10	66"	30"	12"	12"	12"	92	289 lbs.
KR24-W72C-10	72"	36"	12"	12"	12"	110	312 lbs.



Model	Overall Length (A)	Ice Bin Length	Blender Dump Sink Length (B)	Liquor Display Length (C)	Ice Capacity (lbs.)	Weight
KR24-W60D-10	60"	36"	12"	12"	110	273 lbs.
KR24-W66D-10	66"	36"	12"	18"	110	302 lbs.
KR24-W72D-10	72"	36"	18"	18"	110	330 lbs.



Model	Overall Length (A)	Ice Bin Length	Blender Dump Sink Length (B)	Liquor Display Length (C)	Ice Capacity (lbs.)	Weight
KR24-W60E-10	60"	24"	12"	12"	92	304 lbs.
KR24-W66E-10	66"	24"	12"	18"	92	337 lbs.
KR24-W72E-10	72"	24"	18"	18"	92	369 lbs.

