



Model: _____ Item #: _____ Date: _____
Project: _____ Qty: _____ Approved By: _____

60" - 72" Workstations with Liquor Displays

Royal Series Underbar



KR24-W60C-10 shown

Standard Features

- All stations are 24" depth front-to-back
- Built-in 10 circuit cold plate
- Insulated bottle section
- 12" deep ice bin
- 12" or 18" blender dump sink with Royal Series faucet
- 12" or 18" raised liquor display
- 12" recessed drainboard on "C" models
- Sound deadened single speed rail
- Removable bottle wells



Specifications

Materials	▪ Interior (Ice Bin): 20 gauge stainless steel. 12" deep ice bin section. 10" deep bottle section
	▪ Blender Shelf: 22 gauge stainless steel
	▪ Dump Sink (Blender): 20 gauge stainless steel
	▪ Drainboard: 20 gauge stainless steel
	▪ Front Apron: 20 gauge stainless steel clad over 20 gauge galvanized steel
	▪ Backsplash: 20 gauge stainless steel
Drains & Plumbing	▪ Back & Bottom: 20 gauge galvanized steel
	▪ Hot & Cold Water: 1/2" IPS
	▪ Ice Bin with Cold Plate: 1/2" IPS Drain connection. 4" PVC tailpiece provided. PVC tailpiece required to avoid condensation through metal to metal contact.
	▪ Ice Bin with No Cold Plate: 1" IPS Drain connection
	▪ Drainboard: 1" IPS drain connection
Cold Plate	▪ Dump Sink: 1-1/2" IPS drain connection
	▪ Cast aluminum post mix plate with 10 circuits. Plate is sealed into bottom. Each circuit is 5/16" OD stainless steel tubing. Two full with remainder to be half circuits. Bump and swedge fittings on ends.
Tubing Access (Cold Plate)	▪ 3/4" x 3-1/2" cutout in left side of backsplash
Bowl Size (Dump Sink)	▪ 12"W Dump Sink bowl size: 10" x 12" x 7", 18"W Dump Sink bowl size: 14" x 10" x 7"
Electrical (Blender)	▪ Duplex outlet located underneath blender shelf
Insulation (Ice Bin)	▪ Foamed-in-place polyurethane
Faucet	▪ 4" Center wall or deck mount faucet with 1/4 turn ceramic cartridge valves
Backsplash	▪ 6-1/2"H x 1-1/2"D
Side Splash	▪ Included when Ice Bin is adjacent to Blender Dump Sink
Legs	▪ 1-5/8" tubular 16 gauge stainless steel legs with grey plastic bullet foot

Optional Accessories

Model	Description
KR-101	Condiment Tray
KR-103	Stainless Steel Divider
KR-303	Left and Right Side Splash
KR-311	Right End Splash
KR-310	Left End Splash

Model	Description
SC"XX"H	Partial Sliding Cover for Ice Bin ("XX" denotes size of Ice Bin)
SC"XX"F	Full Sliding Cover for Ice Bin ("XX" denotes size of Ice Bin)
KR-501	Towel Ring
30-160	Perforated Dump Basket
KR-806	Upgrade: 6" Longer Stainless Steel Legs



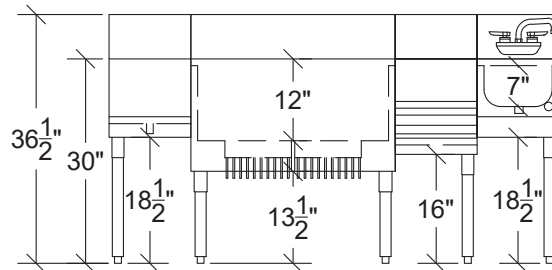
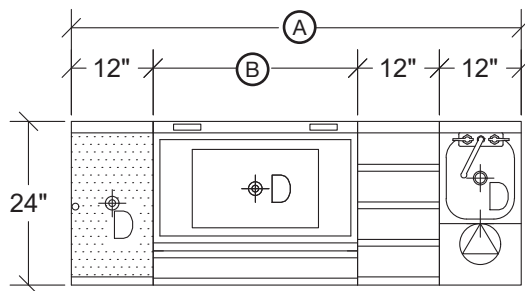
Model: _____ Item #: _____ Date: _____

Project: _____ Qty: _____ Approved By: _____

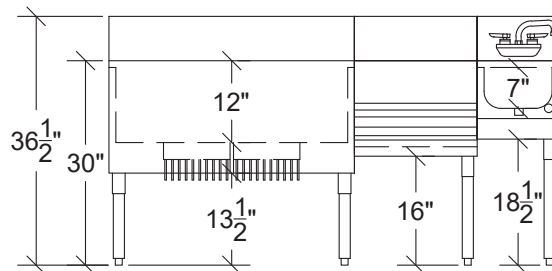
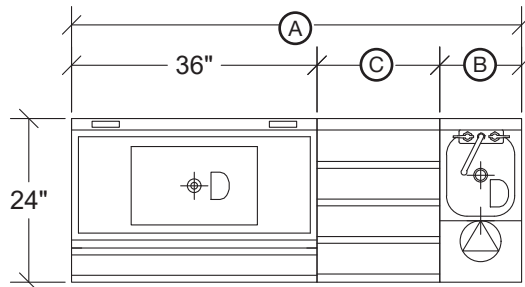
60" - 72" Workstations with Liquor Displays

Royal Series Underbar

Model	Overall Length (A)	Ice Bin Length (B)	Blender Dump Sink Length	Drainboard Length	Liquor Display Length	Ice Capacity (lbs.)	Cold Plate Circuits	Weight (lbs.)
KR24-W60C-10	60"	24"	12"	12"	12"	74	10 circuit	262
KR24-W66C-10	66"	30"	12"	12"	12"	92	10 circuit	289
KR24-W72C-10	72"	36"	12"	12"	12"	110	10 circuit	312



Model	Overall Length (A)	Ice Bin Length	Blender Dump Sink Length (B)	Liquor Display Length (C)	Ice Capacity (lbs.)	Cold Plate Circuits	Weight (lbs.)
KR24-W60D-10	60"	36"	12"	12"	110	10 circuit	273
KR24-W66D-10	66"	36"	12"	18"	110	10 circuit	302
KR24-W72D-10	72"	36"	18"	18"	110	10 circuit	330



Model	Overall Length (A)	Ice Bin Length	Blender Dump Sink Length (B)	Liquor Display Length (C)	Ice Capacity (lbs.)	Cold Plate Circuits	Weight (lbs.)
KR24-W60E-10	60"	24"	12"	12"	92	10 circuit	304
KR24-W66E-10	66"	24"	12"	18"	92	10 circuit	337
KR24-W72E-10	72"	24"	18"	18"	92	10 circuit	369

