



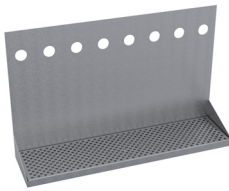
Model: _____ Item #: _____ Date: _____
 Project: _____ Qty: _____ Approved By: _____

Wall Mounted Dispenser, Glycol

MASTER TAP



KWM-8S
 Faucet and Tap Handles Not Included
 Shown in Brush Stainless Finish



KHT-24S
 (Optional) Hanging Drip Tray - Sold
 Separately

Description

Krowne's wall mount dispenser is designed to be used with a glycol-cooled long-draw draft beer system. Made of durable stainless steel, our wall mount dispensers come with vinyl lines for connection to your draft beer system and mounting hardware. Matching Hanging Drip Trays are sold separately.

Standard Features

- Standard finish is brushed stainless steel
- Faucets and tap handles not included
- Includes 6' of 3/16" ID vinyl lines for each faucet
- Pressurized for Krowne's standard 30 PSI beer system
- Constructed and assembled in the USA
- Custom finish available upon request
- Hanging drip tray not included (KHT-)
- Glass rinser integration option available

Model	Faucets	Overall Length (A)	Faucet to Faucet (B)	Edge to Center (C)	Faucet Spacing	Depth of Tower Box	Height of Tower Box	Hanging Drip Tray Option	Length	Depth	Height
KWM-4S	4	12"	9"	6"	3"	3-1/2"	5-1/2"	KHT-12S	12"	6"	15"
KWM-6S	6	24"	15"	12"	3"	3-1/2"	5-1/2"	KHT-24S	24"	6"	15"
KWM-8S	8	24"	21"	15"	3"	3-1/2"	5-1/2"	KHT-24S	24"	6"	15"
KWM-10S	10	30"	27"	18"	3"	3-1/2"	5-1/2"	KHT-30S	30"	6"	15"
KWM-12S	12	36"	33"	24"	3"	3-1/2"	5-1/2"	KHT-36S	36"	6"	15"
KWM-16S	16	48"	45"	30"	3"	3-1/2"	5-1/2"	KHT-48S	48"	6"	15"

