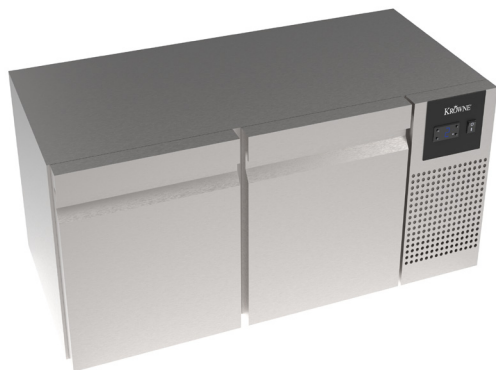


## MoveWell Low Profile Refrigerator

MoveWell Stations



### Standard Features

- 23 1/2" overall depth
- (2) Sliding Drawers for easy access
- High-contrast digital display for clear and precise temperature readings
- R290 hydrocarbon refrigerant
- Automatic defrost cycle

### Specifications

- |                          |   |
|--------------------------|---|
| <b>Electrical</b>        | <ul style="list-style-type: none"> <li>▪ NEMA 5-15P plug configuration</li> <li>▪ 115V, 60Hz</li> <li>▪ Furnished with 6'-5" plug-in cord</li> <li>▪ 2 Door Unit: 6 amps, 1/4 HP</li> </ul> |
| <b>Refrigeration</b>     | <ul style="list-style-type: none"> <li>▪ R290 Hydrocarbon Refrigerant</li> <li>▪ 28.5°F-46.5°F operating range</li> <li>▪ Digital thermostat on front grille</li> </ul>                     |
| <b>Plumbing</b>          | <ul style="list-style-type: none"> <li>▪ No drain required</li> <li>▪ Condensate evaporator pan included</li> </ul>   |
| <b>Insulation</b>        | <ul style="list-style-type: none"> <li>▪ 2" thick HCFC free Polyurethane Insulation</li> </ul>  |
| <b>Interior/Exterior</b> | <ul style="list-style-type: none"> <li>▪ 304 stainless steel construction</li> <li>▪ Weight: 190 Lbs</li> </ul>   |
| <b>Drawers</b>           | <ul style="list-style-type: none"> <li>▪ 304 stainless steel constructed drawers with soft stop technology</li> </ul>   |

| Model | Description                  | Width | Depth   |
|-------|------------------------------|-------|---------|
| UC48L | 48" Low Profile Refrigerator | 48"   | 23 1/2" |

