



MASTERTAP™
BEVERAGE DISPENSING SYSTEMS

Keg Capacity Guide

For Direct Draw Coolers

Models DB36, DB52, DB60, DB72, DB84, DB108



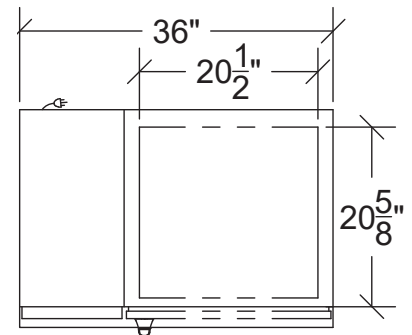
Intertek

Conforms TO UL Std 471
Certified to CSA Std C22.2 #120

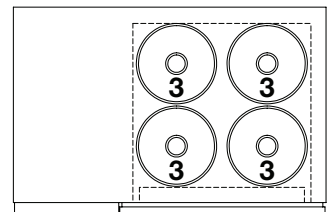
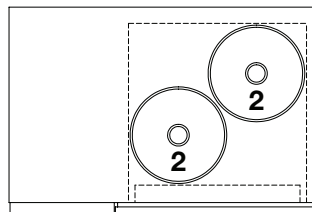
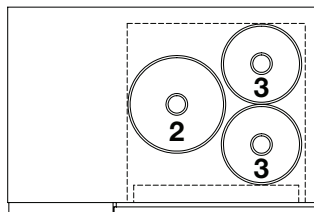
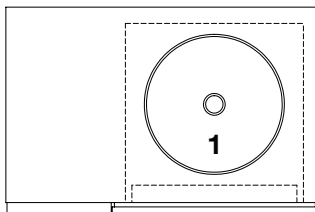


Single Door Units

Models beginning with DB36



20" x 20-5/8" Inside Cabinet

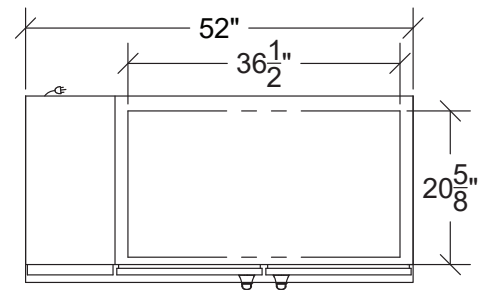




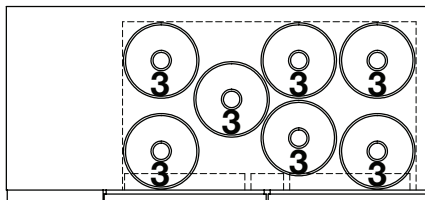
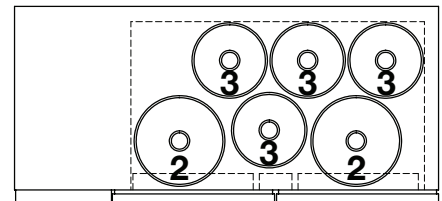
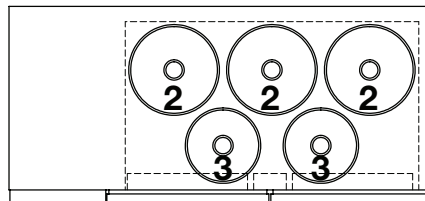
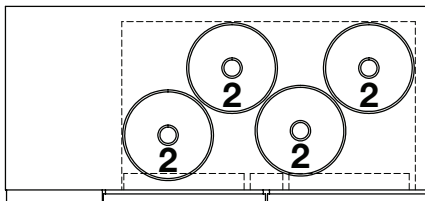
Two Door Units

Models beginning with DB52

NOTE: DB52 models have narrow doors and cannot fit Half Barrels



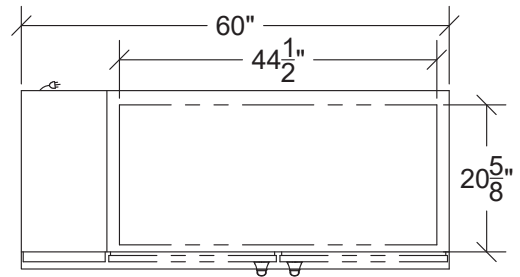
36-1/2" x 20-5/8" Inside Cabinet



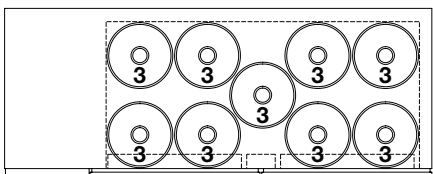
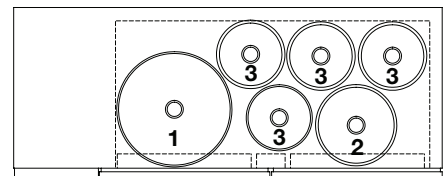
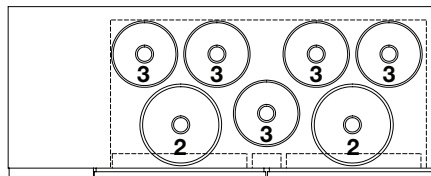
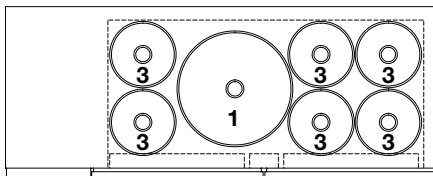
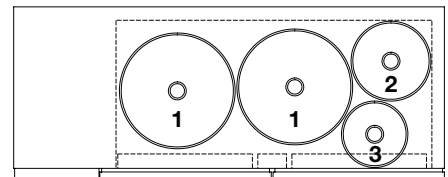
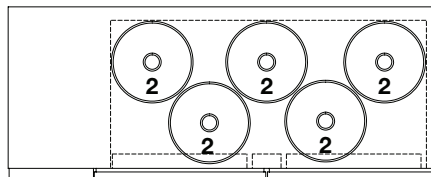
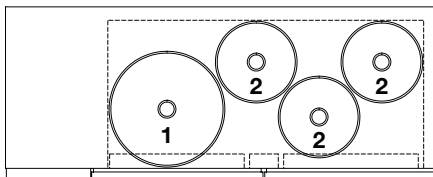


Two Door Units

Models beginning with DB60



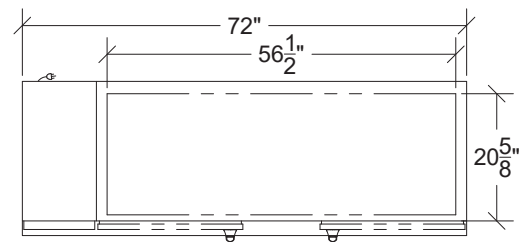
44-1/2" x 20-5/8" Inside Cabinet



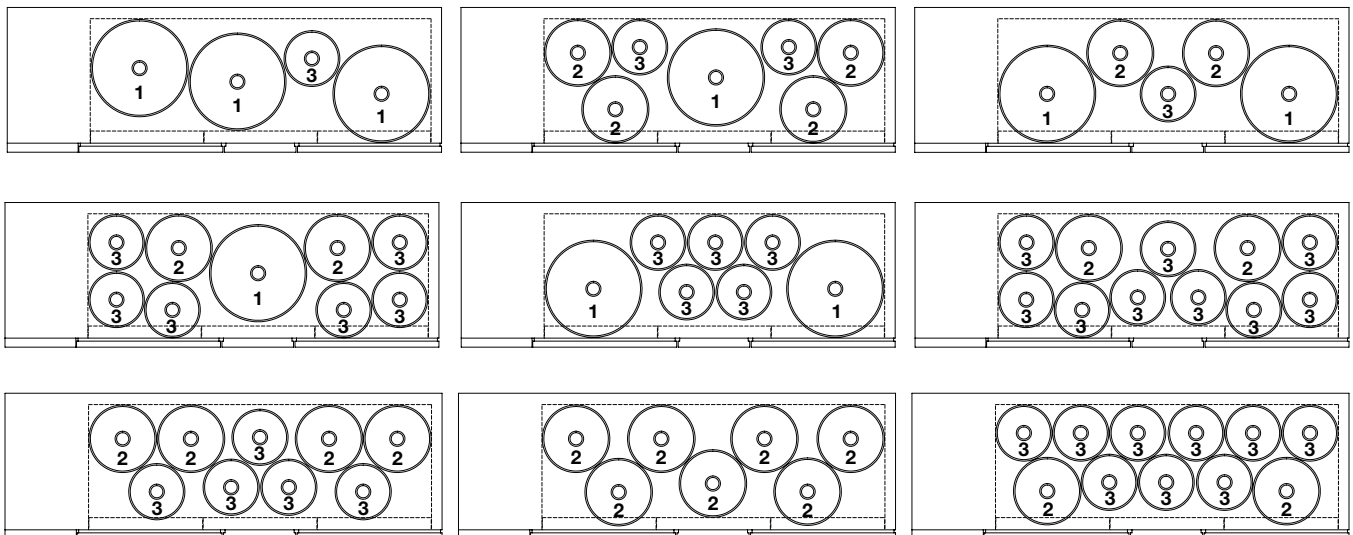


Two Door Units

Models beginning with DB72



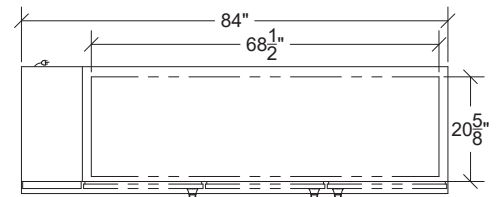
56-1/2" x 20-5/8" Inside Cabinet



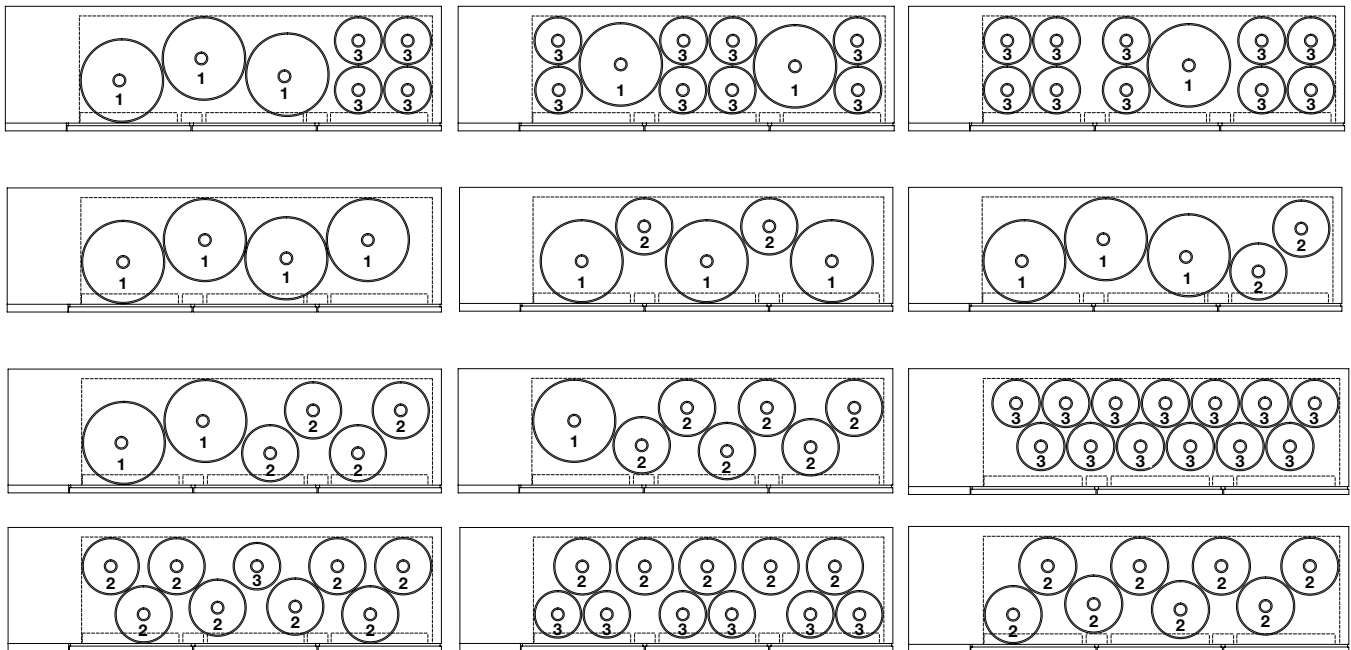


Three Door Units

Models beginning with DB84



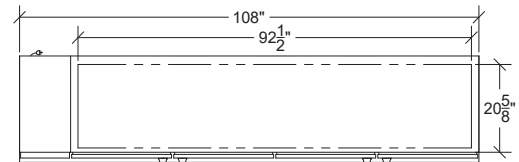
68-1/2" x 20-5/8" Inside Cabinet



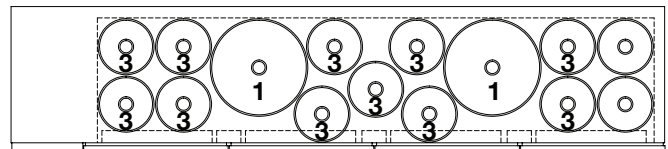
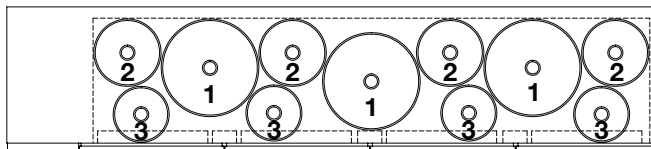
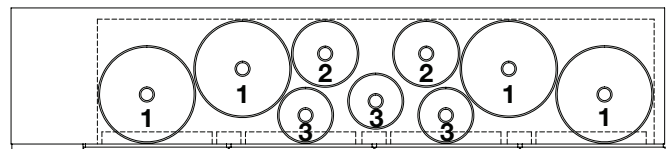
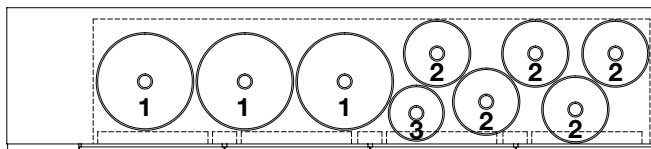
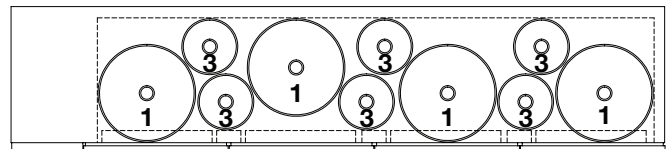
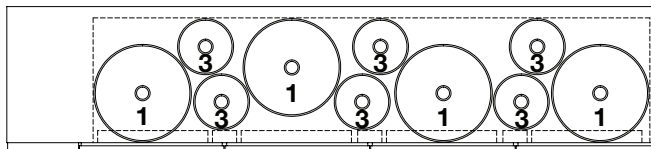
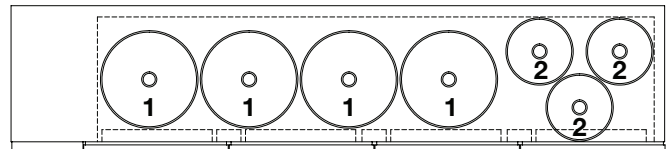
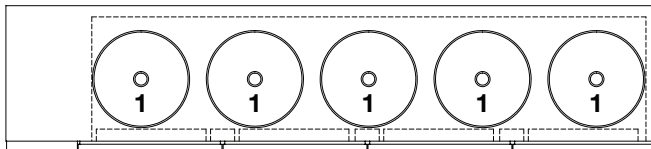


Four Door Units

Models beginning with DB108



92-1/2" x 20-5/8" Inside Cabinet



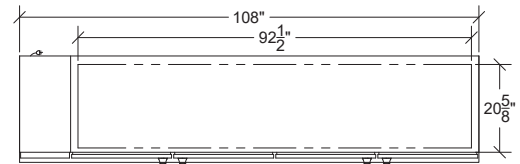
More DB108 configurations on the next page >



Four Door Units

(continued)

Models beginning with DB108



92-1/2" x 20-5/8" Inside Cabinet

