



Model: **HS-1317** Item #: _____ Date: _____
Project: _____ Qty: _____ Approved By: _____

13" x 17" Drop-In Sink

Hand Sinks



Specifications

Overall Size	▪ 13"W x 17"D x 5-3/8"H
Bowl	▪ 10"W x 12"D x 5-3/8"H deep drawn bowl
Faucet	▪ 4" center deck mount faucet with 4-1/2" double bend spout (11-435L) ▪ 1.8 GPM aerator
Drain	▪ 1-1/2" stainless steel drain
Material	▪ 16 gauge stainless steel top and bowl bottom ▪ 18 gauge stainless steel bowl apron
Plumbing	▪ 1/2" IPS hot and cold water ▪ 1-1/2" IPS drain outlet
Weight	▪ 8 lbs.

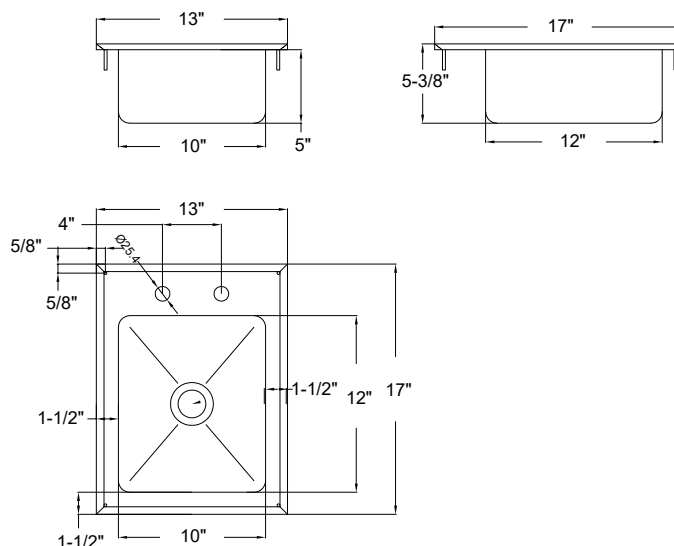
Model	Description
HS-1317	13" x 17" Drop-In Sink

Replacement Parts & Accessories

11-435L	4" Center Faucet w/ 4-1/2" Double Bend Spout
16-232L	Spout-Mount Eyewash
21-300L	Silver Series Faucet Valve Repair Kit
21-311L	Wrist Blade Handle Kit
21-196L	Deck Mounting Kit
21-198L	1/2" x 3/8" Braided Supply Hoses
21-451	Hands-Free Spout Valve
23-121	1-1/2" Full Flange Stainless Steel Drain
H-105	Wall Mount Towel Dispenser
H-116	Wall Mount Soap Dispenser

Product Compliance

- ASME A112.19.3/CSA B45.4
- NSF 2



California Prop 65 Warning:

This product can expose you to chemicals including lead and lead compounds, which are known to the State of California to cause cancer and birth defects or other reproductive harm. For more information go to www.P65Warnings.ca.gov.