

## One Compartment Drop-In Sink with 1-1/2" Drain

## Hand Sinks

### Standard Features (applies to all models)

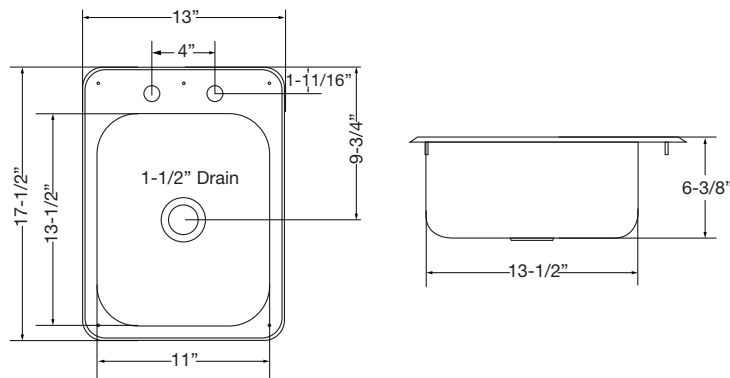
- 20 gauge stainless steel fabrication
- All seams tig welded and polished
- High quality deep drawn bowl
- Faucet & drain included
- Stainless steel 1-1/2" drain
- 4" center deck mount faucet
- Faucet included is certified to NSF/ANSI 61 and 372 and conforms with the lead content requirements for lead free plumbing as defined by the U.S. Safe Drinking Water Act. Hand sink is certified NSF-2



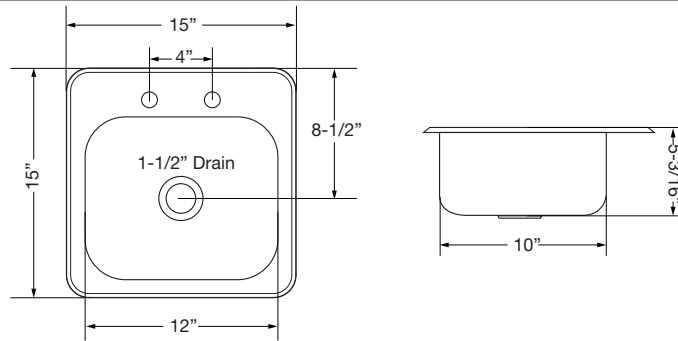
Model	Overall Size	Bowl Size	Cutout (1-1/4" Radius)	Spout Size (GPM)	Wgt.
HS-1317	13"W x 17-1/2"L x 6-3/8"D	11"W x 13-1/2"L x 6-3/8"D	11-1/2"W x 16"L	4-1/2" double bend (1.8 GPM)	8
HS-1515	15"W x 15"L x 5-3/16"D	12"W x 10"L x 5-3/16"D	14-3/8"W x 14-3/8"L	4-1/2" double bend (1.8 GPM)	8
HS-2017	20"W x 17"L x 7-3/4"D	17-3/4"W x 12-3/4"L x 7-3/4"D	18-1/4"W x 15-1/2"L	6" double bend (1.8 GPM)	10



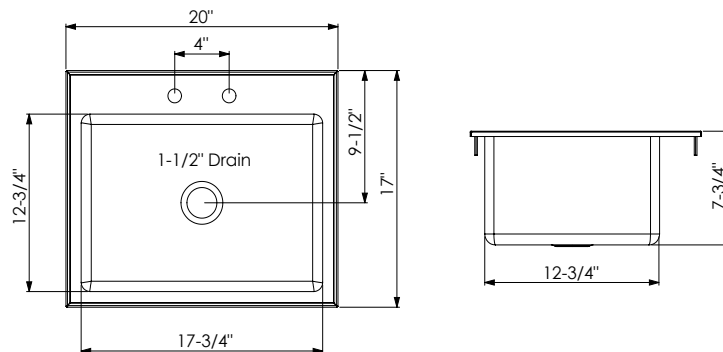
**HS-1317**  
13" x 17-1/2" Drop-In Sink



**HS-1515**  
15" x 15" Drop-In Sink



**HS-2017**  
20" x 17-3/4" Drop-In Sink



### Warning:

Plumbing connections should be made by qualified personnel who will observe all applicable plumbing, sanitary and safety codes

### California Prop 65 Warning:

This product can expose you to chemicals including lead and lead compounds, which are known to the State of California to cause cancer and birth defects or other reproductive harm. For more information go to [www.P65Warnings.ca.gov](http://www.P65Warnings.ca.gov).