



Model: HS-62 Item #: _____ Date: _____
 Project: _____ Qty: _____ Approved By: _____

9" MiniMax with 4" Center Electronic Sensor Faucet

Hand Sinks



HS-62

DESCRIPTION

- 9" MiniMax package includes: 4" Wall Mount Battery Operated Electronic Sensor Faucet, 1-1/2" Drain, Side Splashes, and Wall Bracket

HAND SINK SPECIFICATIONS

Material	304 Stainless Steel
Gauge	20 Gauge
Sink Dimensions	9"W x 12"L x 14"H
Bowl Dimensions	8"W x 8"L x 6" Deep
Faucet	16-670 Electronic Sensor Faucet
Drain	1-1/2"
Mount	Wall Mount Bracket
Weight	17 lbs.

PRODUCT COMPLIANCE

Sink:

- NSF-2



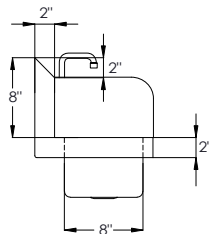
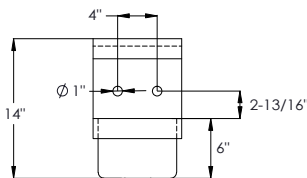
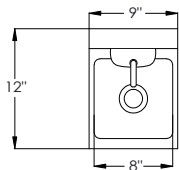
Faucet:

- ASME A112.18.1-2011/CSA B125.1-11
- NSF-61
- NSF/ANSI 372
- Meets ANSI A117.1 (ADA)
- CEC Listed
- Massachusetts Approved



FAUCET SPECIFICATIONS

Model	16-670
Water Inlet	3/8" Male NPS
Temp. Range	40°F - 180°F
Water Pressure	20 -120 PSI
Sensor Type	Infrared
Flow Rate	2.2 GPM
Default Time Out	30 seconds
Default GPC	1.10
Default Shut-Off Delay	1 Second
Default Auto Flush	Off
Sensor Range	3/4" - 8-1/4"
Power Source	(4) AA Batteries Included
Battery Life	500,000 cycles
Material	Solid Brass
Finish	Brushed Nickel



Included

Electronic Faucet includes Control Module, Mechanical Mixing Valve, and supply hoses.



Optional

AC Adapter
16-199



WARNING: Plumbing connections should be made by qualified personnel who will observe all applicable plumbing, sanitary and safety codes.
 California Proposition 65 Warning