

Tool Caddy

ROYAL SERIES



Model	Description
KR24-TC12	Tool Caddy

Product Compliance

Jet Rinser

- Pending Certifications

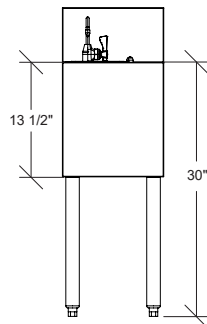
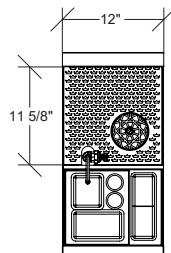


Dipper Well Faucet

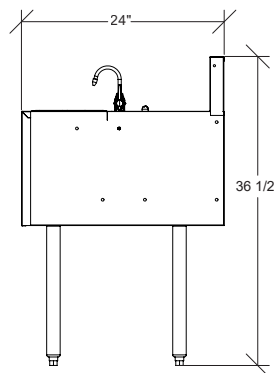
- NSF-61 & NSF/ANSI 372
- NSF/ANSI/CAN 61 Q<1
- ASME A112.18.1-2018/CSA B125.1-18

KR24-TC12

- NSF-2



KR24-TC12



Standard Features

- High performance jet rinser clears residue in seconds
- (4) individual wet compartments designated for cleaning tools
- Side mounted dry storage for additional tools
- Perforated stainless drainboard
- Continuous dipperwell rinse keeps tools bacteria-free

Specifications (Jet Rinser)

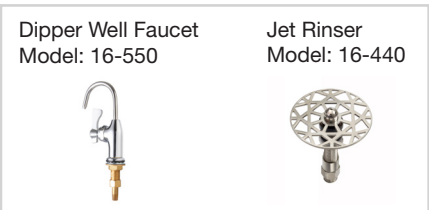
Pressure Regulation	21 PSI
Inlet	1/2" NPS Male
Rough In	7/8" Single Hole

Specifications (Dipper Well Faucet)

Inlet	1/2" NPS Male
Rough In	7/8" Single Hole
Flow Rate	0.4 GPM

Specifications (Tool Caddy)

Material	304 Stainless Steel
Gauge	20 GA
Backsplash Height	6"
Weight	60 lbs



Warning:

Plumbing connections should be made by qualified personnel who will observe all applicable plumbing, sanitary and safety codes

California Prop 65 Warning:

This product can expose you to chemicals including lead and lead compounds, which are known to the State of California to cause cancer and birth defects or other reproductive harm. For more information go to www.P65Warnings.ca.gov.