

**Included:**

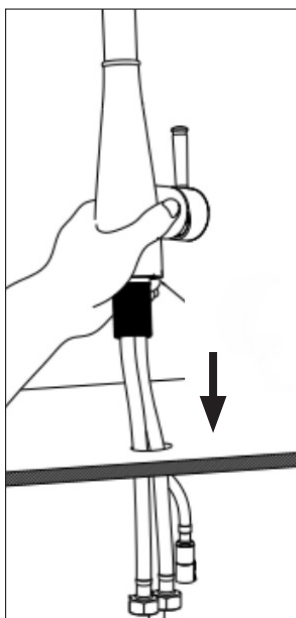
Faucet Body
Touch Module
Pulling Hose
Hot/Cold Water Supply

Residential Faucet Manual

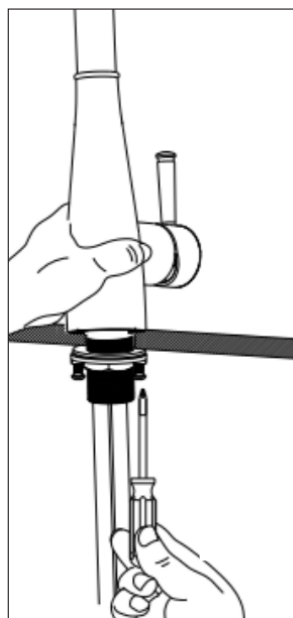
Tools Required:
Phillips Head Screwdriver

Installation

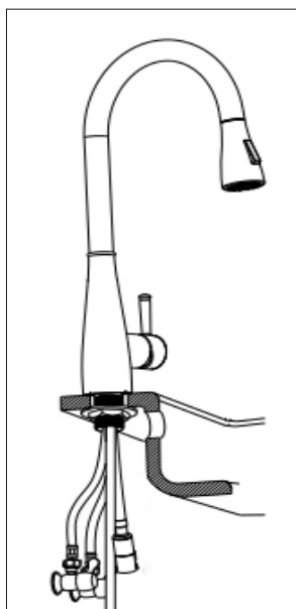
WARNING: Plumbing connections should be made by qualified personnel who will observe all applicable plumbing, sanitary and safety codes.



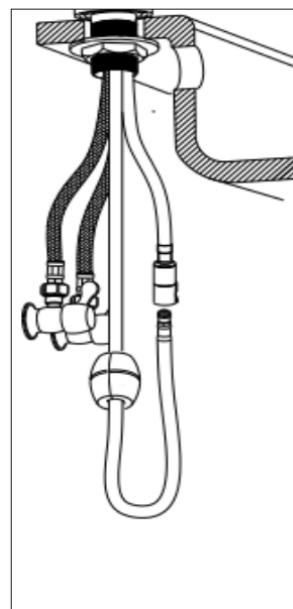
1. First remove the rubber washer, lock-nut, and metal gasket from the bottom of the faucet. Carefully insert water lines and faucet base through cut-out in counter top.



2. Align faucet with sink basin, carefully slide rubber washer and metal gasket over water lines. Thread lock-nut onto base and tighten.



3. Slide pull-down hose through weight assembly and connect to faucet outlet by pushing the hose end onto outlet until a click is heard. Important: Be sure that pull-down hose is free of twists or interference with plumbing hoses and drains under sink area.



4. Connect hot and cold water lines to corresponding shut-off valves using a sealing tape, and tighten until secure. Carefully open shut off valves and watch for leaks. If a leak is present close shut off valves and re-tighten. Note: Placing a bucket or shallow pan under shut off valves will help prevent damage to cabinet material.
5. Moderately pull on pull-down hose connection to ensure it is secure.



Residential Faucet Manual

Maintenance

1. When cleaning your residential faucet, always blot dry any water off the faucet surface. Allowing water to evaporate on surface of the faucet body may cause water spots and the build-up of minerals.
2. Use soft microfiber or linen to carefully polish and clean faucet.
3. Avoid using rough abrasives, steel wool, or soiled cloths to clean as this may damage or scratch the finish.
4. DO NOT use acidic or alkali detergents to clean faucet.
5. Remove the spout filter every 6 months to clean debris for long-lasting performance.

Troubleshooting

Problem	Cause	Solution
No water out	<ul style="list-style-type: none">▪ No water supply or faucet is not turned on▪ Incoming supply line is being blocked▪ Faucet spout is dirty and blocking water▪ Outlet is blocked by debris	<ul style="list-style-type: none">▪ Ensure water supply is turned on▪ Flush lines and/or faucet outlet to ensure there is no debris causing blockage
Cannot turn off water or water leakage	<ul style="list-style-type: none">▪ Installation was not performed properly▪ Missing or loose lock nut▪ Sealing gasket is worn or damaged	<ul style="list-style-type: none">▪ Double check installation▪ Ensure all lock nuts are securely tightened▪ Replace gasket
Low flow rate	<ul style="list-style-type: none">▪ Water pressure is too low▪ Faucet switch is not completely opened▪ Inside of water supply line is blocked▪ Outlet is partially blocked by debris▪ Screen filler of output spout is blocked	<ul style="list-style-type: none">▪ Check if water pressure is normal▪ Check if the input supply line is smooth▪ Flushing screen filter in the spout
Water temperature not matched with label	<ul style="list-style-type: none">▪ Hot or cold water output is not matched with the marking	<ul style="list-style-type: none">▪ Check for installation problems near the hot or cold water pipe
Assembly issue during faucet installation	<ul style="list-style-type: none">▪ Faucet was installed with non-factory parts▪ Incorrect maintenance methods	<ul style="list-style-type: none">▪ Use original parts during installation▪ Adhere by the provided manual



NOTE: Be sure to turn water off at stops before servicing any faucet. Faucet service should only be performed by licensed plumbers.

Residential Faucet Manual

Tools Required:

2.5mm Hex Key

Crescent Wrench

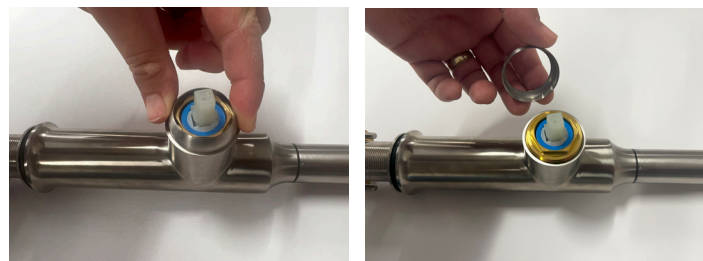
How to replace a 19-4 Series Valve



1. Carefully remove the faucet lever handle by twisting counter-clockwise. Note: if additional force is required be sure to wrap lever handle with clean cloth or rag to prevent scratching or damage.



2. Using 2.5 mm hex key, remove the set screw that is located inside the hole that was uncovered by removing the handle.



3. Remove the lever handle cover to expose decorative cap over brass nut. Loosen and remove the decorative cap by turning counter-clockwise.



Residential Faucet Manual



4. Using an adjustable style crescent wrench remove brass lock nut securing the valve.



5. Remove and replace the valve. Reverse the steps to reinstall the new valve. Turn on water at stops and verify there are no leaks.

Warranty



Please visit krowne.com/warranty for full terms and conditions regarding the warranty on your new Krowne Home product.

Product Description	Warranty Period
Home Faucets	5 Year

This Standard Warranty and Limitation of Liability (the “Warranty”) sets forth the warranty provided by Krowne Metal Corporation (hereinafter “Krowne”) with respect to the product purchased by Purchaser (the “Equipment”). By accepting delivery of the Equipment, Purchaser agrees to be bound by and accept these terms and conditions. All defined terms within the Warranty shall have the same meaning and definition as provided elsewhere in the Warranty. Equipment covered by the Warranty shall only be warranted in connection with its original installation only. Krowne will only be obligated to honor the warranty set forth in these terms and conditions upon receipt of full payment for the equipment.