



Model: _____ Item #: _____ Date: _____
 Project: _____ Qty: _____ Approved By: _____

Convenience Store Sinks

SILVER SERIES UNDERBAR



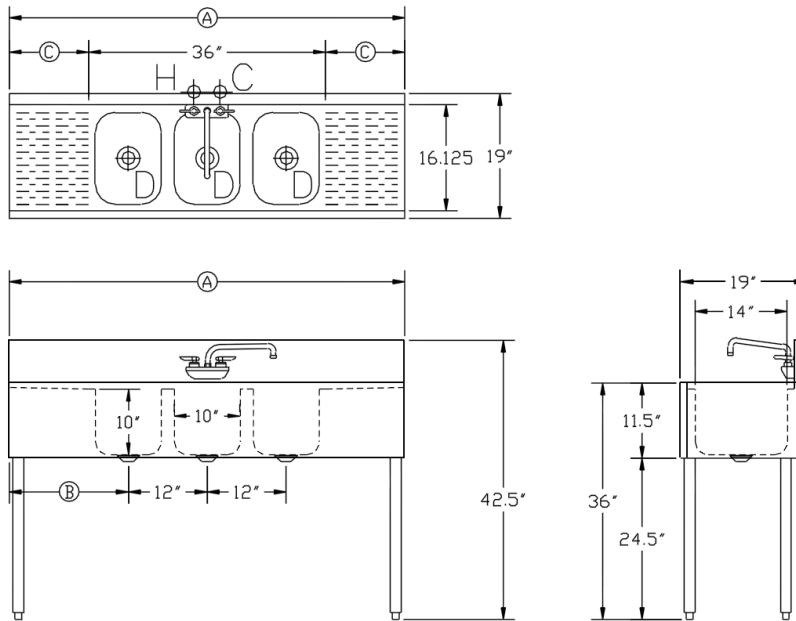
CS-1860 shown
 Available in 36", 60", and 72" sizes

Standard Features

Sink Bowls	20 gauge stainless steel 10" x 15" x 10" deep Furnished with 3-1/2" basket drains
Drainboard	20 gauge stainless steel reinforced with welded braces every six inches
Material	<ul style="list-style-type: none"> Front Apron: 20 gauge stainless steel over 20 gauge galvanized steel Sides: 20 gauge stainless steel Backsplash: 20 gauge stainless steel Back & Bottom: 20 gauge galvanized steel
Legs	1-5/8" tubular 16 gauge stainless steel with grey plastic bullet feet
Faucet	4" center wall mount faucet
Plumbing	1/2" IPS hot and cold water 1-1/2" IPS drain connection

Optional Accessories

H-109 Faucet Upgrade: Royal Series Faucet



Model	Overall Length (A)	Bowls	Left Side to Drain	Drainboard Size (C)	Bowl(s) Location	Weight (lbs)
CS-1836	3'-0"	3	6"	N/A	Center	69
CS-1860	5'-0"	3	18"	12" (2 ea.)	Center	118
CS-1872	6'-0"	3	24"	18" (2 ea.)	Center	138

MECHANICAL REQUIREMENTS: 1/2" IPS hot and cold connection. 1-1/2" IPS drain connection

