



KROWNE

MOVE WELL

ADAPTIVE STATIONS

Elevate your workspace with the ultimate configurable workstation. Speed swap plumbing connections, various insert options, and an integrated track for smooth glide movement allows you to operate like never before.



Innovative modular design creates an adaptive workstation environment for total flexibility behind the bar



Lightning fast re-configuration for crafting specialty cocktails, left-handed bartenders, coffee station setups during day shift, and much more



Integrated backsplash with Speed Swap connections along with pre-plumbed units for out of the box use and interchangeability



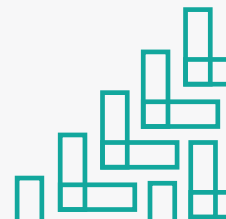
Ultra-low profile refrigerator with pull-out drawers for storage of cans, bottles, and more (optional)

MW48R

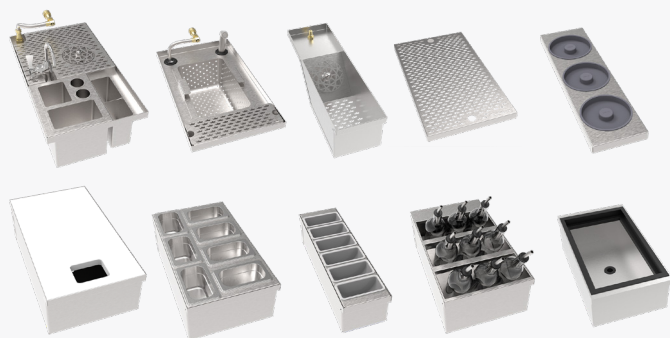
MoveWell Station with Integrated Ultra-low Profile Refrigerator (48"W x 29"D x 30"H)

MW48

MoveWell Station on Legs (48"W x 29"D x 30"H)



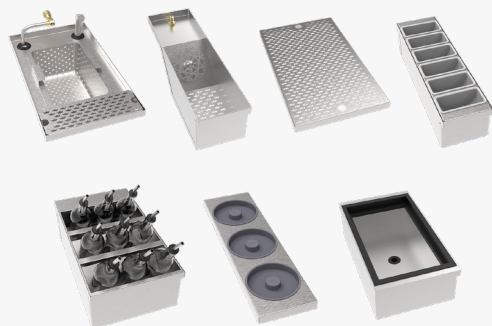
MOVEWELL BUNDLES



*MW-ELITE

MoveWell Elite Bundle

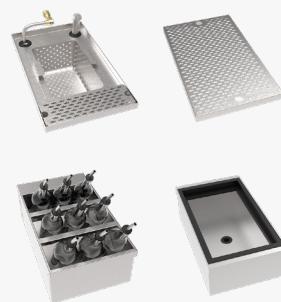
MW-IB12, MW-SR12, MW-WD12, MW-DB12, MW-MR6, MW-SJ6, MW-CT6, MW-CT12, MW-CS12, MW-TC12



*MW-ENHANCED

MoveWell Enhanced Bundle

MW-IB12, MW-SR12, MW-WD12, MW-DB12, MW-MR6, MW-SJ6, MW-CT6

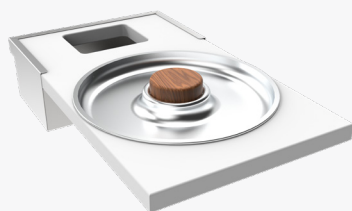


*MW-ESSENTIALS48

MoveWell Essentials Bundle

MW-IB12, MW-SR12, MW-WD12, MW-DB12

OUR NEWEST MODULAR INSERTS



MW-OS12

MoveWell Oyster Insert



MW-CF12

MoveWell Coffee Insert

MOVEWELL MODULAR INSERTS

| | |
|----------------|---|
| MW-CB12 | MoveWell Cutting Board |
| MW-CF12 | MoveWell Coffee Insert |
| MW-CS12 | MoveWell Cutting Board with Trash Chute |
| MW-CT6 | MoveWell 6 Cup Condiment Tray (6" W) |
| MW-CT12 | MoveWell 12 Cup Condiment Tray (12" W) |
| MW-DB12 | MoveWell Drainboard (12" W) |
| MW-IB12 | MoveWell Ice Bin (12" W) |
| MW-MR6 | MoveWell Margarita Rimmer (6" W) |

| | |
|----------------|---|
| MW-OS12 | MoveWell Oyster Insert |
| MW-QD10 | MoveWell Quick Disconnect Kit |
| MW-S | MoveWell Sprayer with Stainless Steel Hose & QD |
| MW-SJ6 | MoveWell Spray Jet |
| MW-SR12 | MoveWell Bottle 3-Tier Speed Rack |
| MW-TC12 | MoveWell Tool Caddy (12" W) |
| MW-WD12 | MoveWell Wash Down Dump Sink |
| MW-10 | MoveWell 1/4" NPT 10" Water Line |

*Cannot mix & match bundles.